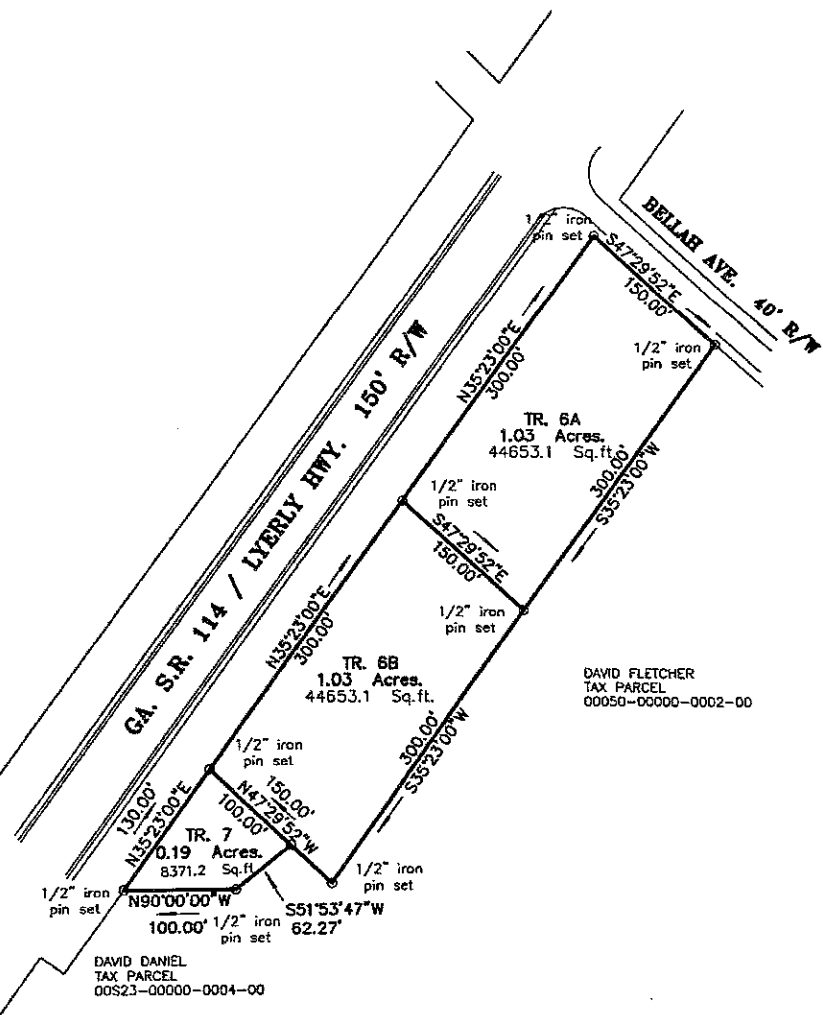


SURVEY FOR
BALLENGER PROPERTY
 SALE 6 & 7

PLAT SHOWING TWO TRACTS ON THE SOUTHEASTERLY
 OF GEORGIA STATE ROUTE 114 / LYERLY HIGHWAY, IN
 THE CITY OF SUMMERVILLE, IN LAND LOT 21, 6th DISTRICT,
 3rd SECTION, CHATTOOGA COUNTY, GEORGIA.



1. THE FIELD DATA UPON WHICH THIS PLAT IS BASED HAS A CLOSURE PRECISION OF ONE FOOT IN 19,669 FEET WITH AN ANGULAR ERROR OF 6 SECONDS PER ANGLE POINT AND WAS ADJUSTED USING COMPASS RULE.
2. THIS PLAT HAS BEEN CALCULATED FOR CLOSURE AND IS FOUND TO BE ACCURATE WITHIN ON FOOT IN 445,337 FEET.
3. BEARINGS AND DISTANCES FOR THIS SURVEY WERE MEASURED WITH A TOPCON GTS-213 WITH A SINGLE PRISM.
4. BEARINGS SHOWN HEREON HAVE BEEN CALCULATED FROM ANGLES TURNED AND AREA BASED UPON OBSERVED MAGNETIC BEARINGS.
5. THIS PROPERTY IS SUBJECT TO ALL EASEMENTS AND RIGHTS OF WAY.
6. MATTERS OF ADVERSE POSSESSION ARE NOT RESOLVED BY THIS SURVEY.



JOB: 16BALLENGER7&7A
 FILE: 50-6-4
 SCALE: 1" = 100'
 FIELD DATE: OCT. 08, 2016
 PLAT DATE: OCT. 21, 2016
 REVISED:

BURKE LAND SURVEYING
 59 SAGE BRUSE LANE
 SUMMERVILLE, GEORGIA
 (706) 857-7201

DAVID DANIEL
 TAX PARCEL
 00S23-00000-0004-00

DAVID FLETCHER
 TAX PARCEL
 00050-00000-0002-00

IN MY OPINION THIS PLAT IS
 A CORRECT REPRESENTATION
 OF THE LAND PLATTED AND WAS
 PREPARED IN ACCORDANCE WITH
 THE MINIMUM STANDARDS AND
 REQUIREMENTS OF GEORGIA LAW.



Scanned with CamScanner