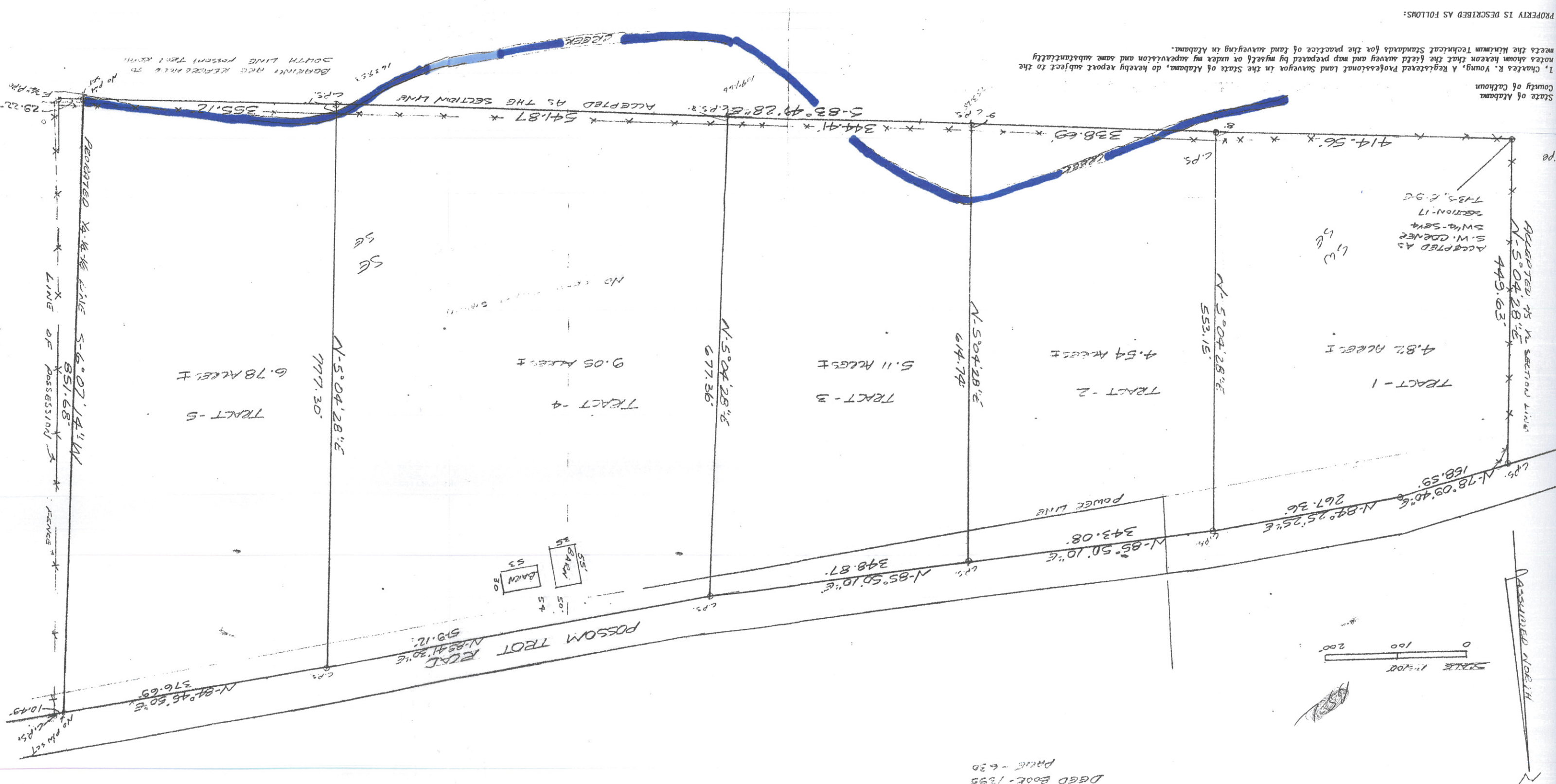


BOUNDARY SURVEY

DGGD Book - 1395  
Page - 630



I, Charles R. Young, a Registered Professional Land Surveyor in the State of Alabama, do hereby report subject to the notes shown hereon that the field survey and map prepared by myself or under my supervision and same substantially meets the Minimum Technical Standards for the practice of land surveying in Alabama.

State of Alabama  
County of Calhoun

PROPERTY IS DESCRIBED AS FOLLOWS:

BEARING AND DISTANCE TO THE SOUTH LINE POSSUM TROT ROAD

ACCEPTED AS THE SECTION LINE

RECORDED 1/4-1/4-1/4 LINE

LINE OF POSSESSION

RECORDED 1/4-1/4-1/4 LINE

BEARING AND DISTANCE TO THE SOUTH LINE POSSUM TROT ROAD

ACCEPTED AS THE SECTION LINE

RECORDED 1/4-1/4-1/4 LINE

LINE OF POSSESSION

RECORDED 1/4-1/4-1/4 LINE

BEARING AND DISTANCE TO THE SOUTH LINE POSSUM TROT ROAD

ACCEPTED AS THE SECTION LINE

RECORDED 1/4-1/4-1/4 LINE

LINE OF POSSESSION

RECORDED 1/4-1/4-1/4 LINE

BEARING AND DISTANCE TO THE SOUTH LINE POSSUM TROT ROAD

ACCEPTED AS THE SECTION LINE

RECORDED 1/4-1/4-1/4 LINE

LINE OF POSSESSION

RECORDED 1/4-1/4-1/4 LINE

BEARING AND DISTANCE TO THE SOUTH LINE POSSUM TROT ROAD

ACCEPTED AS THE SECTION LINE

RECORDED 1/4-1/4-1/4 LINE

LINE OF POSSESSION

RECORDED 1/4-1/4-1/4 LINE

BEARING AND DISTANCE TO THE SOUTH LINE POSSUM TROT ROAD

ACCEPTED AS THE SECTION LINE

RECORDED 1/4-1/4-1/4 LINE

LINE OF POSSESSION

RECORDED 1/4-1/4-1/4 LINE

BEARING AND DISTANCE TO THE SOUTH LINE POSSUM TROT ROAD

ACCEPTED AS THE SECTION LINE

RECORDED 1/4-1/4-1/4 LINE

LINE OF POSSESSION

RECORDED 1/4-1/4-1/4 LINE