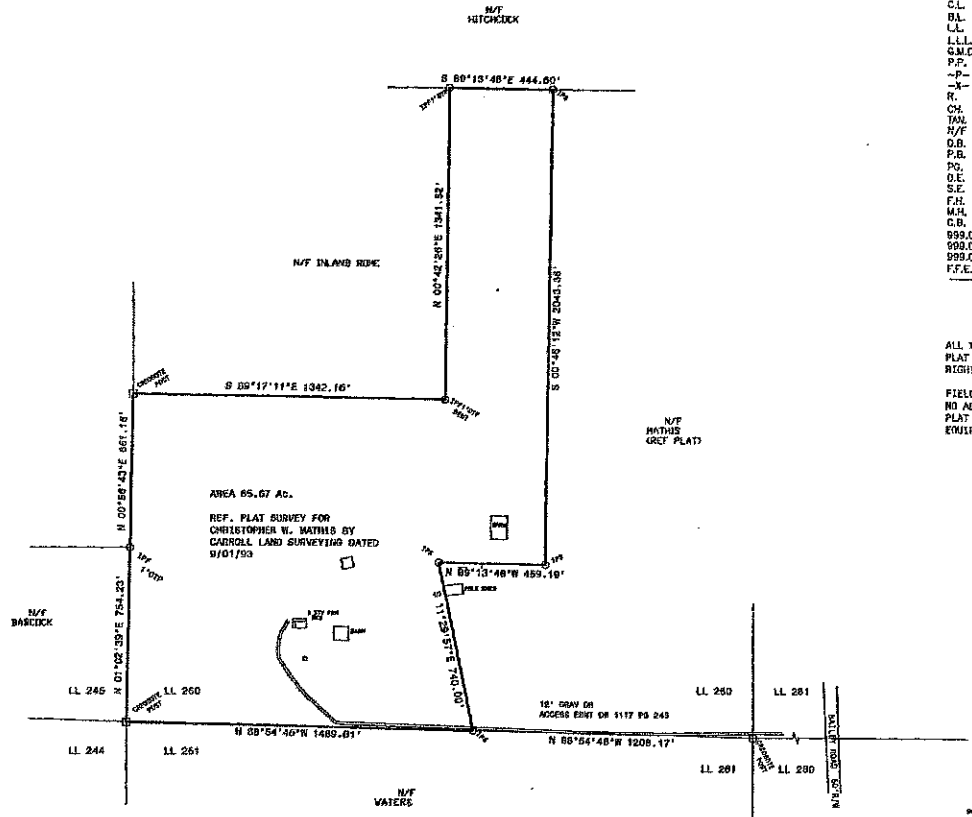


MAGNETIC NORTH

THIS SURVEY WAS PREPARED IN CONFORMITY WITH THE TECHNICAL STANDARDS FOR PROPERTY SURVEYS IN GEORGIA AS SET FORTH IN CHAPTER 100-7 OF THE RULES OF GEORGIA BOARD OF REGISTRATION FOR PROFESSIONAL ENGINEERS AND LAND SURVEYORS AND SET FORTH IN THE GEORGIA PLAT ACT OCGA 15-9-07

- LEGEND
- I.P.F. = IRON PIN FOUND
  - I.P.S. = IRON PIN SET
  - R.B.F. = RE-BAR FOUND
  - R.B.S. = RE-BAR SET
  - O.T. = OPEN TOP
  - C.T. = CRIMPED TOP
  - R/W = RIGHT OF WAY
  - PL = PROPERTY LINE
  - C.L. = CENTER LINE
  - BL = BUILDING LINE
  - LL = LAND LOT
  - LL.L. = LAND LOT LINE
  - G.M.D. = GEORGIA METRO DISTRICT
  - P.P. = POWER POLE
  - P- = POWER LINE
  - F- = FENCE LINE
  - R. = RADIUS
  - CH = CHORD
  - T/WL = TANGENT
  - N/F = NOW OR FORMERLY
  - D.B. = DEED BOOK
  - F.B. = PLAT BOOK
  - PG. = PAGE
  - D.E. = DRAINAGE EASEMENT
  - S.E. = SEWER EASEMENT
  - F.H. = FIRE HYDRANT
  - M.H. = MANHOLE
  - C.B. = CATCH BASIN
  - 999.0 E. = EXISTING SPOT ELEVATION
  - 999.0 F. = FINISHED SPOT ELEVATION
  - 999.0 P. = PROPOSED SPOT ELEVATION
  - F.F.E. = FINISHED FLOOR ELEVATION
  - - - - - = SURFACE DRAINAGE FLOW



ALL MATTERS OF TITLE ARE EXCEPTED. THIS PLAT SUBJECT TO ALL LEGAL EASEMENTS AND RIGHT OF WAYS, PUBLIC OR PRIVATE.

FIELD E/D 1" IN 11,500'  
 NO ADJ. WERE MADE  
 PLAT E/C 1" IN 20,000'  
 E/WIP TOPCON GTS 2

Doc ID: 0020310001  
 Recorded: 02/12/2016 at 10:52:00 AM  
 File #1: 64.02 Page 1 of 1  
 Filed County: Floyd Co. Court  
 Barbara N. Penick Clerk  
 35 199



BOUNDARY SURVEY FOR  
**AL JETT**

LAND LOT 260 223d. DIST. 3rd. SECT  
 FLOYD CO., GEORGIA  
 1" = 300'  
 9/0/15

ROGER S. LEE & ASSOC.  
 PO BOX 1145  
 WOODSTOCK, GA. 30188  
 770 653 9984

