

COMPOSITE MAP FOR

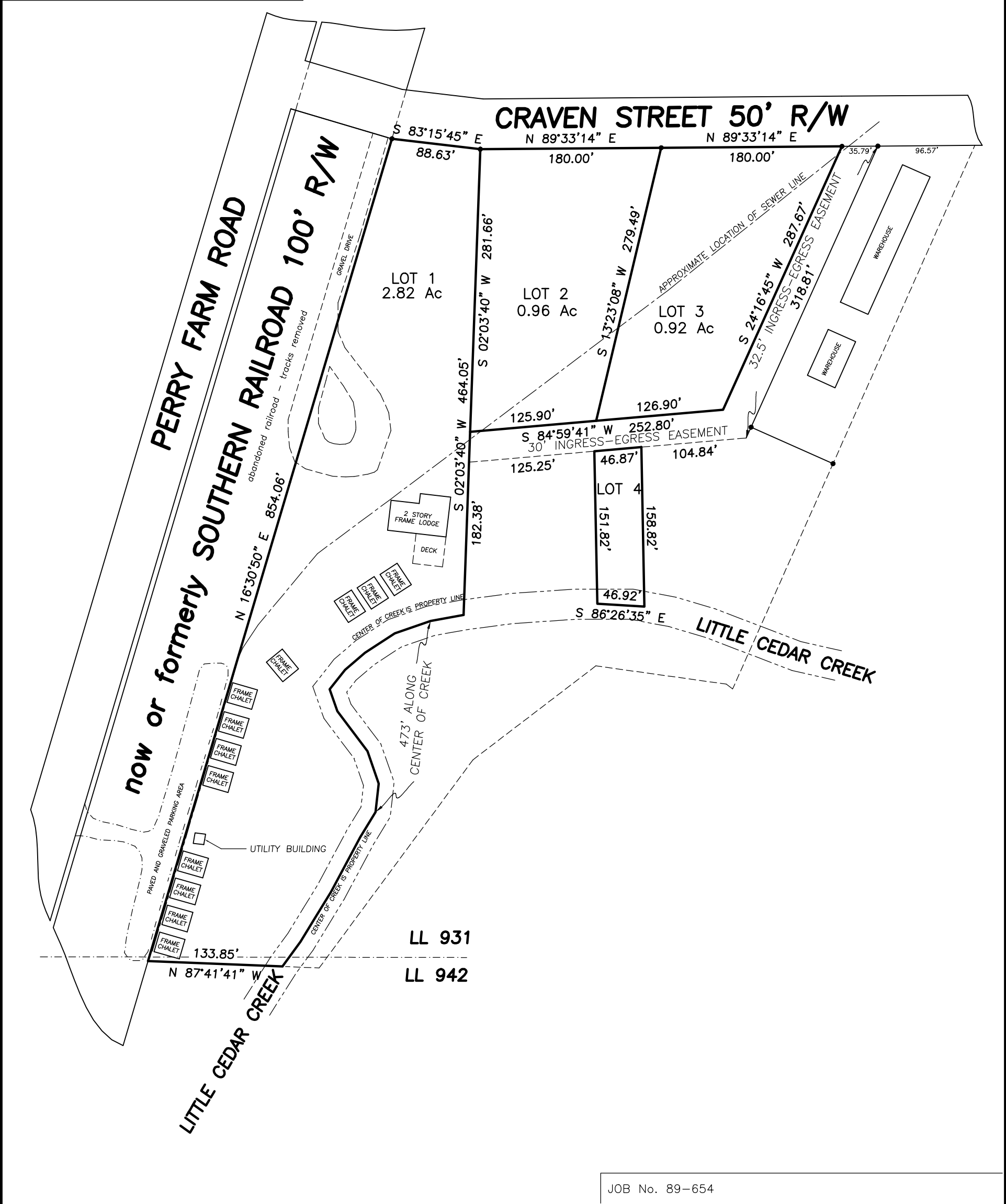
GREMAR, LLC

BEING IN LAND LOTS 931 & 942 3rd DISTRICT
4th SECTION CITY OF CAVE SPRING
FLOYD COUNTY GEORGIA

SCALE 1" = 100' MAP DATE: NOVEMBER 2022



4.70 Acres Total



LL 931
LL 942