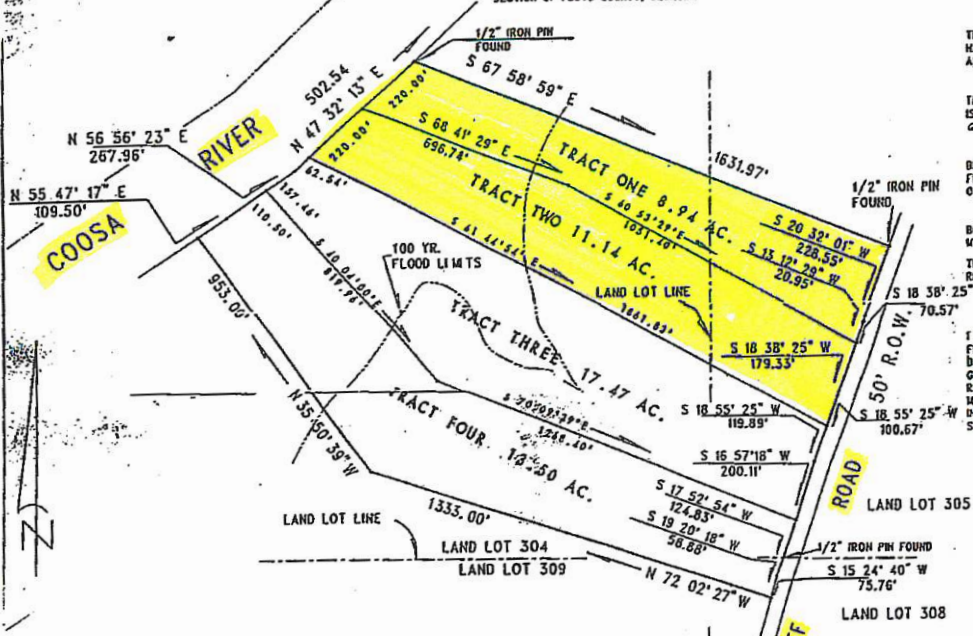


SURVEY SHOWING A DIVISION OF A CERTAIN TRACT OF LAND LYING IN
LAND LOTS 304, 305, 308, AND 309 OF THE 4TH DISTRICT AND 4TH
SECTION OF FLOYD COUNTY, GEORGIA.



THE FIELD DATA UPON WHICH THIS PLAT IS BASED
HAS A CLOSURE PRECISION OF 1 FOOT IN 8,354 FEET
AND WAS ADJUSTED USING COMPASS RULE.

THIS PLAT HAS BEEN CALCULATED FOR CLOSURE AND
IS FOUND TO BE ACCURATE WITHIN ONE FOOT IN
62,952 FEET.

BEARINGS SHOWN HEREON HAVE BEEN CALCULATED
FROM ANGLES TURNED AND ARE BASED UPON
OBSERVED MAGNETIC BEARINGS.

BEARINGS AND DISTANCES FOR THIS SURVEY WERE
MEASURED WITH A LIETZ SDM 3E WITH A SINGLE PRISM.
THIS PROPERTY IS SUBJECT TO ALL EASEMENTS AND
RIGHTS OF WAY.

I HAVE THIS DATE, EXAMINED THE "FIA OFFICIAL
FLOOD HAZARD MAP" COMMUNITY PANEL 130079-0255 A,
DATED MAY 19, 1987 COVERING FLOYD COUNTY,
GEORGIA.
REFERENCED LOT IS LOCATED ON PANEL 255 OF SAID
MAP IN AN AREA ZONED "ZONE X, AND ZONE EA" AND IS
IN AN AREA HAVING SPECIAL FLOOD HAZARDS AS
SHOWN HEREON.

JOB: 60276
FILE: 4-4-304
SCALE: 1" = 200'
DATE: AUG. 17, 1996

GROVER HIGGINS ASSOCIATES
2417 GARDEN LAKES BLVD. STE. D
ROME, GEORGIA, 30165
PHONE: (706) 291-8009



IN MY OPINION THIS PLAT IS A CORRECT
REPRESENTATION OF THE LAND PLATTED AND
HAS BEEN PREPARED IN CONFORMITY WITH THE
MINIMUM STANDARDS AND REQUIREMENTS OF
GEORGIA LAW.

