

LEGEND

	TREE
	NAIL
	CALCULATED POINT, NO PIN SET OR FOUND
	CONCRETE MONUMENT
	CONCRETE MONUMENT WITH DISC
	EXISTING IRON PIN
	FORTY CORNER
	RAILROAD SPIKE
	CAPPED 1/2" REBAR (LS#21183)
	CAPPED 1/2" REBAR (CA-497-LS)
	RAILROAD TRACKS
	LINE NOT TO SCALE
	FENCE LINE
	CENTER LINE
	POWER POLE
	OVERHEAD ELECTRIC LINE

REVISIONS

11/09/17	REVISED
TRACT (2)	

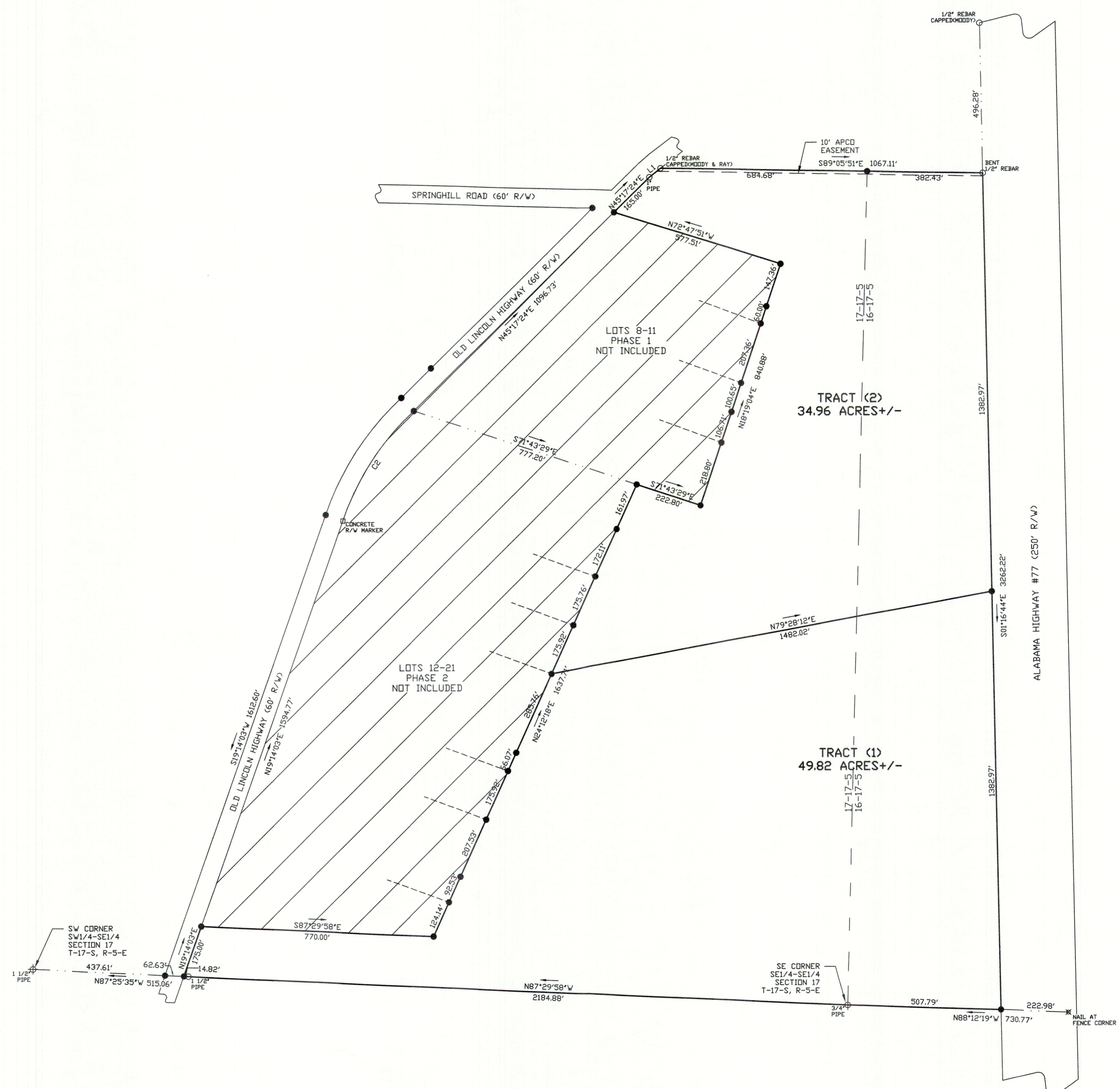
**HARALSON/KESSLER
TALLADEGA COUNTY, ALABAMA**

JOB INFORMATION

DRAWN BY:	ADW
CHECKED BY:	LWW
FIELD NOTES:	2017/05 PG. 46
SURVEY CREW:	CP, BW
SURVEY #:	517-380
S-T-R:	17-17-5

**LARRY WALKER
LAND SURVEYING, INC.**

P.O. BOX 2726
5430 OLD HIGHWAY #278E
HOKES BLUFF, AL 35903
PHONE: (256)492-7940
FAX: (256)492-8417
EMAIL: LARRY.LWLS@GMAIL.COM

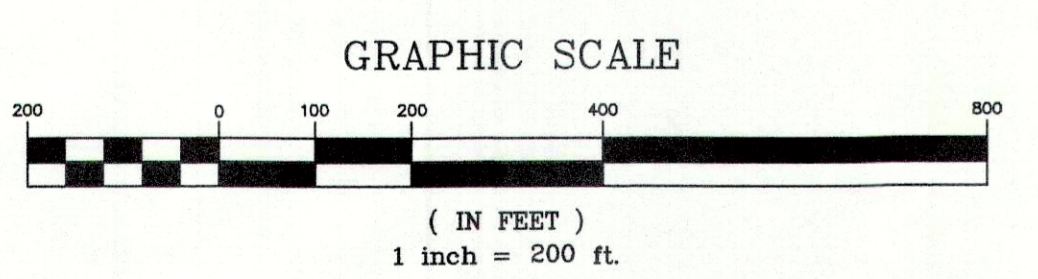


LINE TABLE

LINE	LENGTH	BEARING
L1	47.04'	N51°07'25"E

CURVE TABLE

CURVE	CHORD LENGTH	CHORD BEARING	LENGTH	RADIUS
C1	460.92'	S32°53'06"W	465.74'	933.42'
C2	432.70'	N32°53'51"E	437.25'	873.42'



GRID NORTH & BEARINGS SHOWN ARE IN REFERENCE TO NAD83 ALABAMA EAST ZONE STATE PLANE COORDINATES ESTABLISHED BY STATIC GPS, RTK, GPS AND CONVENTIONAL SURVEYING METHODS.

ALABAMA EAST ZONE GRID