

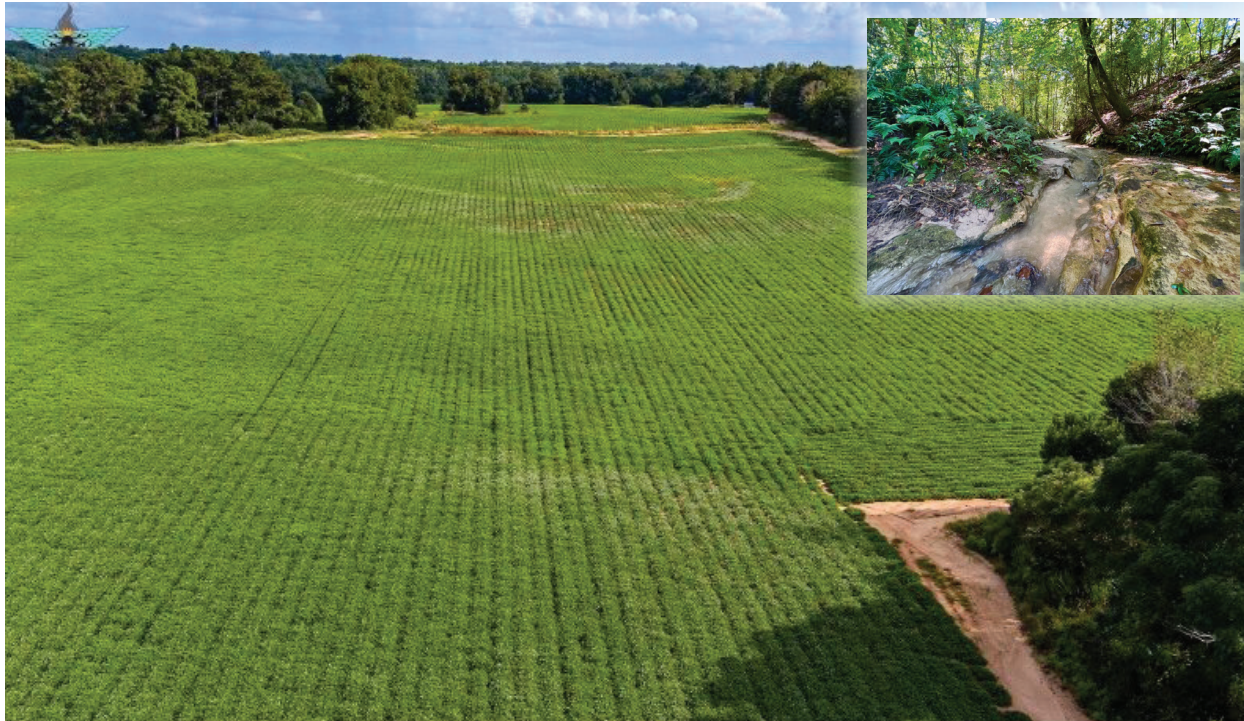
DEMPSEY AUCTION

SATURDAY, OCTOBER 28, 2023 AT 10:00 AM CDT

Midland City/Dale County, Alabama

292± Acres of Beautiful Land with Creek Frontage

- Minutes from the "Circle" in Dothan, Highway 231 in Midland City, Napier Airfield, Wallace Community College, and Major Shopping and Restaurant
- Property to be Offered in Tracts, Combinations of Tracts, or as a Whole
- Tillable Land, Timber, and County Water
- Excellent for Livestock, Equestrian, Homesites, Development, Crops, or Cattle
- A nice branch runs through the property with multiple pond sites
- Long Frontage on County Road 59



INSPECTION: Property is open for inspection. Dempsey Representatives will be onsite Friday, October 27th from 1:00 PM-3:00 PM to answer any questions

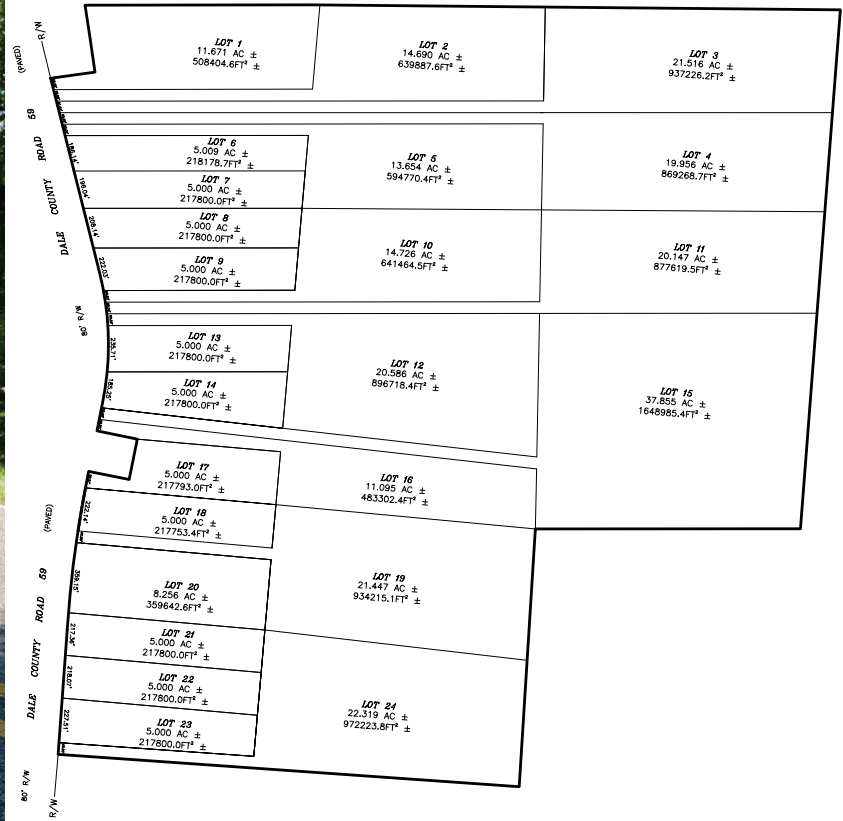
SALE SITE: On-site under the Dempsey Tent.

ONLINE BIDDING: Online Participation/Bidding is available through our Online MarkNet Platform.

TERMS AND CONDITIONS: 10% Buyer's premium will be charged on all purchases. 20% down with a balance due on or before 30 days from contract acceptance.

Call Randy Land @ 706-252-0532 for additional information and to schedule a property viewing.

CALL US BY NAME 1.800.DEMPSEY OR VISIT OUR WEBSITE DEMPSEYAUCTION.COM



Do not miss the chance to purchase the tract you desire, with unmatched location, at auction on Saturday, October 28, 10am CDT. Selling live, on-site, with live online bidding capability

AUCTIONEERS: Ray Dempsey | Lou Dempsey, GAL #113 | ALB#065553 | AAL#1103. **PROJECT MANAGER:** Randy Land – 706.252.0532 – rl@dempseyauction.com

CALL US BY NAME 1.800.DEMPSEY OR VISIT OUR WEBSITE DEMPSEYAUCTION.COM

All information contained in this brochure was derived from sources believed to be correct, but is not guaranteed. Any announcement made from the auction stand shall take precedence over any printed matter in this brochure 2023.