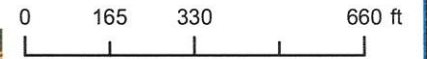


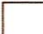



# 8.5x11\_Landscape



-  Selection(s)
-  County Boundary
-  Property Parcels



10/30/2023 

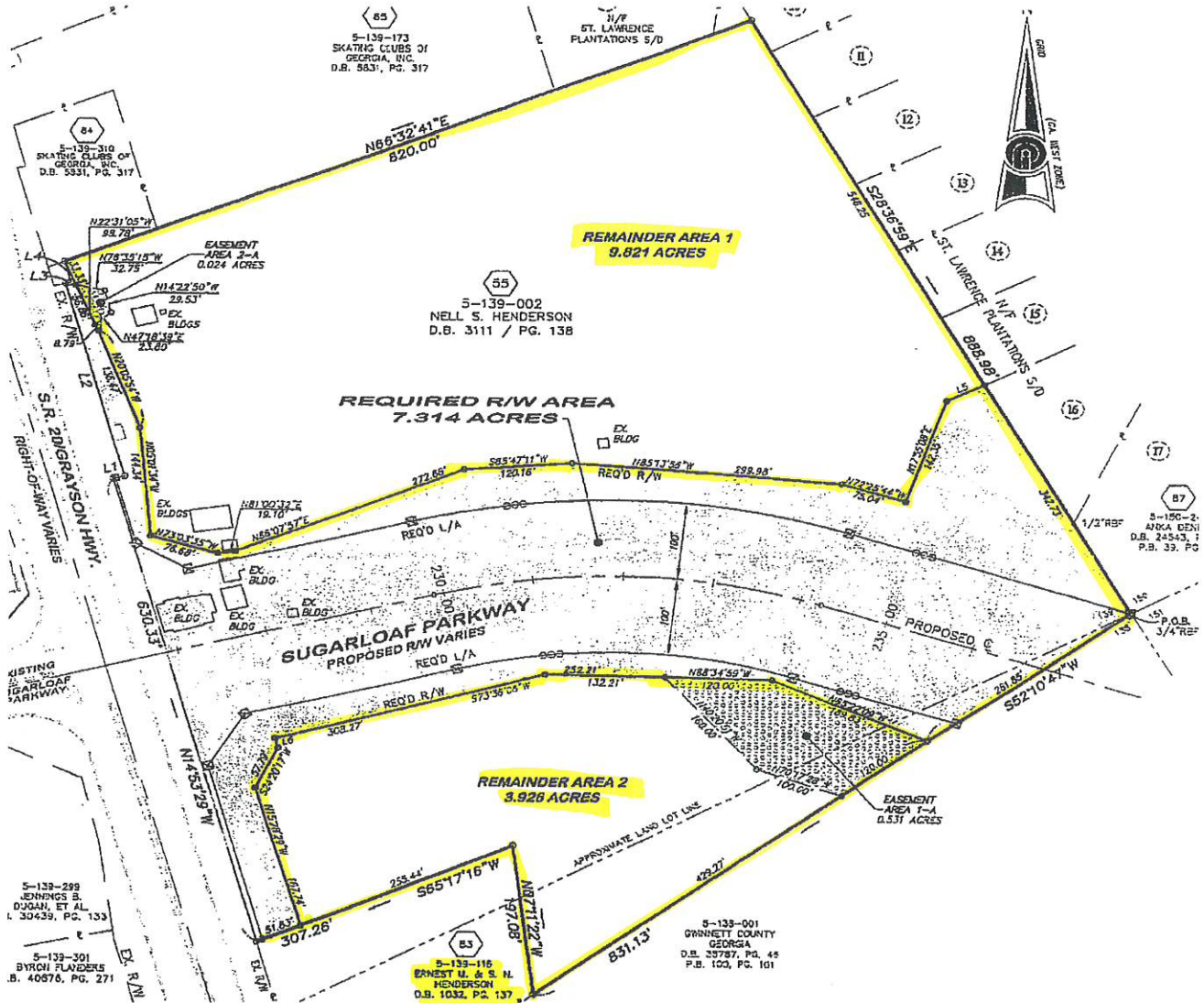
This map is a graphical representation of data obtained from aerial photography, recorded deeds, plats, engineering drawings and other public records and data. Gwinnett County does not warrant the accuracy or currency of the data it has provided and does not guarantee the suitability of the data for any purpose, expressed or implied. ALL DATA IS PROVIDED AS IS, WITH ALL FAULTS, WITHOUT WARRANTY OF ANY KIND, EITHER EXPRESSED OR IMPLIED, INCLUDING, BUT NOT LIMITED TO, THE IMPLIED WARRANTIES OF MERCHANTABILITY OR FITNESS FOR A PARTICULAR PURPOSE. This map is the proprietary product of Gwinnett County and in no event will Gwinnett County be liable for damages, including any loss of profits, lost savings, or other incidental or consequential damages arising out of the use of or inability to use this map.

Aerial Map Layer: 10-26-2023



47981  
00762

BK 47981 PG 0762



**REQUIRED RIGHT OF WAY: 7.314± Acres**  
**TEMPORARY SEDIMENT BASIN EASEMENT: .531± Acres**  
**TEMPORARY DRIVEWAY EASEMENT: .024± Acres**

Exhibit "A" page 1 of 2

<b>Being a portion of right of way plans for Gwinnett County:</b>		
<b>Project:</b> Sugarloaf Parkway Extension, Phase I		
<b>Project Number:</b> GF-0270-01		
<b>Parcel Number:</b> 55		
<b>By:</b> Precision Planning, Inc.		
<b>Sheet Number:</b> 1 of 1		
<b>Owner:</b> Nell S. Henderson		
<b>Date:</b> October 24, 2006	<b>Revised:</b> February 15, 2007	<b>Scale:</b> Not to scale





**Sugarloaf  
Parkway**

**Grayson Hwy / GA 20**

**A**

**B**

**16.21± Acres Prime  
Commercial Land  
\*24,772 Traffic Count  
\*3/2 House w/basement  
\*All Selling As One  
Offering**