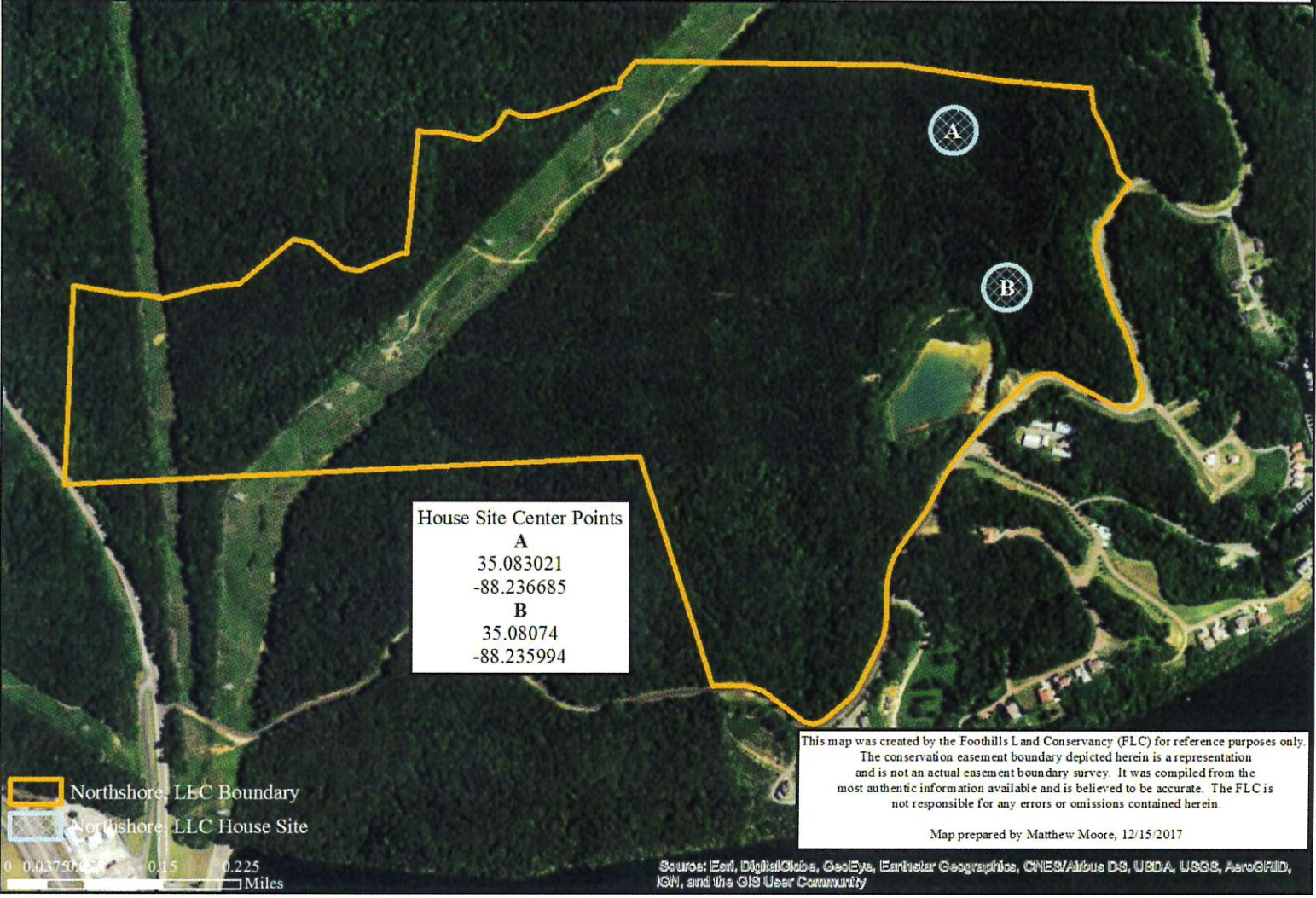




Northshore, LLC Conservation Easement - - Hardin Co, TN -- House Site Map --



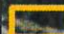
House Site Center Points


A
35.083021
-88.236685

B
35.08074
-88.235994

This map was created by the Foothills Land Conservancy (FLC) for reference purposes only. The conservation easement boundary depicted herein is a representation and is not an actual easement boundary survey. It was compiled from the most authentic information available and is believed to be accurate. The FLC is not responsible for any errors or omissions contained herein.

Map prepared by Matthew Moore, 12/15/2017

 Northshore, LLC Boundary

 Northshore, LLC House Site

0 0.0375 0.075 0.15 0.225 Miles

Source: Esri, DigitalGlobe, GeoEye, Earthstar Geographics, CNES/Airbus DS, USDA, USGS, AeroGRID, IGN, and the GIS User Community

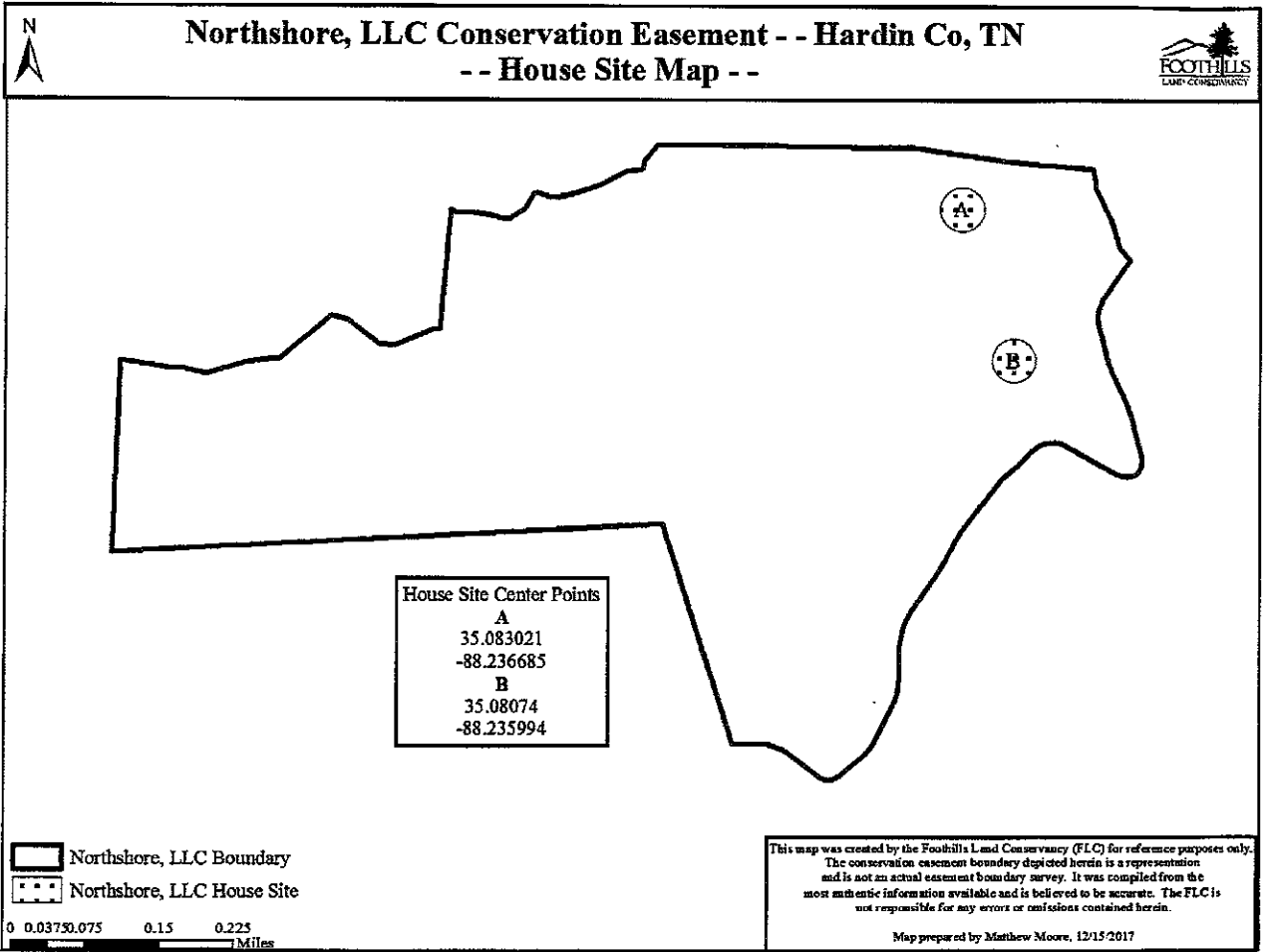


EXHIBIT C

**Northshore, LLC
Legal Description of Homesites**

HomesiteA:

TO FIND THE POINT OF BEGINNING, start at the centerpoint of a circular tract, such centerpoint having coordinates of Latitude $35^{\circ}04'58.8756''$ (35.083021) North and Longitude $88^{\circ}14'12.0660''$ (88.236685) West, thence Due North for a distance of 166.53' to a calculated point in the circumference of said circular tract, the **POINT OF BEGINNING**, thence from said POB with the edge of said circle, in a clockwise direction, a circle having a circumference of 1,046.34' to the said Point of Beginning, said circular tract having an area of approximately 2.0 acres.

HomesiteB:

TO FIND THE POINT OF BEGINNING, start at the centerpoint of a circular tract, such centerpoint having coordinates of Latitude $35^{\circ}04'50.6640''$ (35.080740) North and Longitude $88^{\circ}14'09.5784''$ (87.235994) West, thence Due North for a distance of 166.53' to a calculated point in the circumference of said circular tract, the **POINT OF BEGINNING**, thence from said POB with the edge of said circle, in a clockwise direction, a circle having a circumference of 1,046.34' to the said Point of Beginning, said circular tract having an area of approximately 2.0 acres.

Exhibit C Page 1 of 1