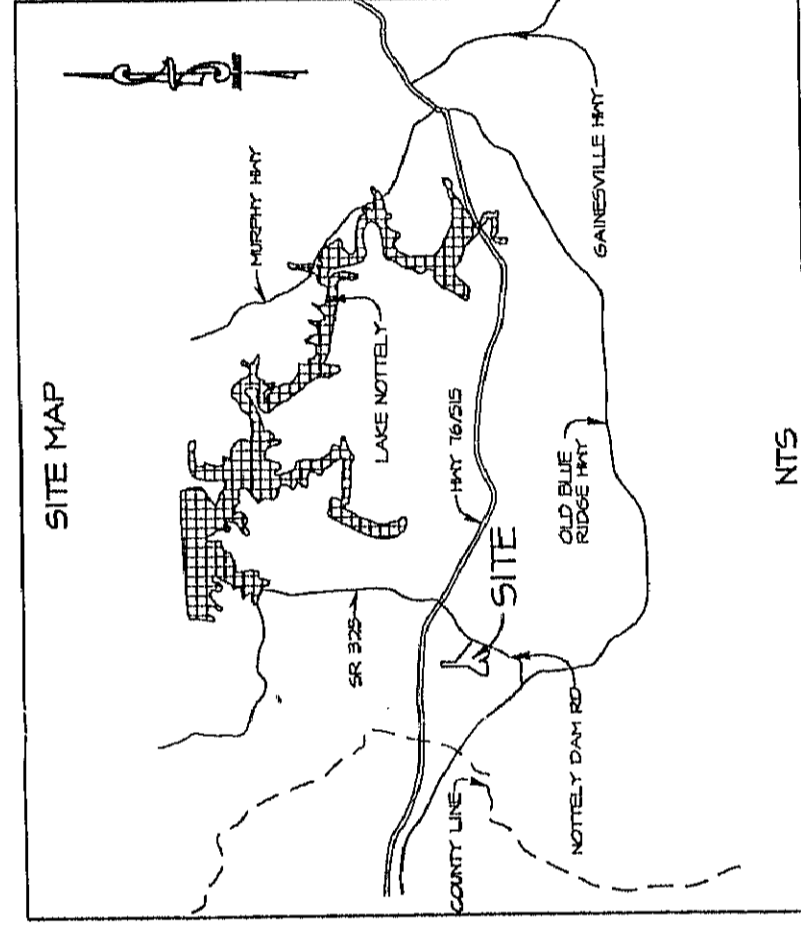


SITE MAP



NTS

LINE	BEARING	DISTANCE
L1	S28°29'55"W	40.00'
L2	N61°49'04"E	114.02'
L3	N84°03'36"W	34.06'
L4	N18°23'44"W	35.24'
L5	N08°03'16"E	191.11'
L6	N83°53'41"W	44.41'
L7	N81°53'41"W	125.30'
L8	N81°53'41"W	116.11'
L9	N83°24'01"W	114.05'
L10	N47°44'34"W	127.94'
L11	S71°21'03"W	16.36'
L12	N81°53'05"W	44.14'
L13	N77°27'03"E	35.02'
L14	S47°44'34"E	127.94'
L15	S33°24'01"E	15.30'
L16	S31°53'41"E	116.64'
L17	S31°53'41"E	124.60'
L18	S33°53'41"E	44.21'
L19	S08°03'16"W	191.11'
L20	S18°29'44"E	35.24'
L21	S61°43'04"E	114.10'
L22	S35°52'33"W	149.60'
L23	N21°14'00"W	146.91'
L24	N48°07'47"E	41.74'
L25	N42°41'31"E	90.78'
L26	N08°56'53"E	52.48'
L27	N08°16'42"E	43.44'
L28	N19°49'53"W	56.28'
L29	N1°07'43"W	62.78'
L30	N48°29'16"W	40.54'
L31	N24°54'23"W	94.40'
L32	N15°52'25"W	42.90'
L33	N17°26'41"W	98.54'
L34	N86°54'50"W	34.23'
L35	N82°42'26"W	65.11'
L36	N81°53'05"W	41.01'
L37	S64°59'12"E	136.03'
L38	S14°14'40"W	114.38'
L39	S68°49'00"W	129.07'
L40	N21°14'00"W	16.76'

NOTES:

THE FIELD DATA UPON WHICH THIS PLAT IS BASED HAS A CLOSURE PRECISION OF ONE FOOT IN 100,000 FEET. THE ANGLES WERE MEASURED WITH A THEODOLITE AND WAS ADJUSTED USING A LEAST SQUARE ADJUSTMENT. EQUIPMENT USED WAS A NIKON NTL-352.

THIS PLAT HAS BEEN CALCULATED FOR A CLOSURE AND IS FOUND TO BE ACCURATE WITHIN ONE FOOT IN 441,086 FEET.

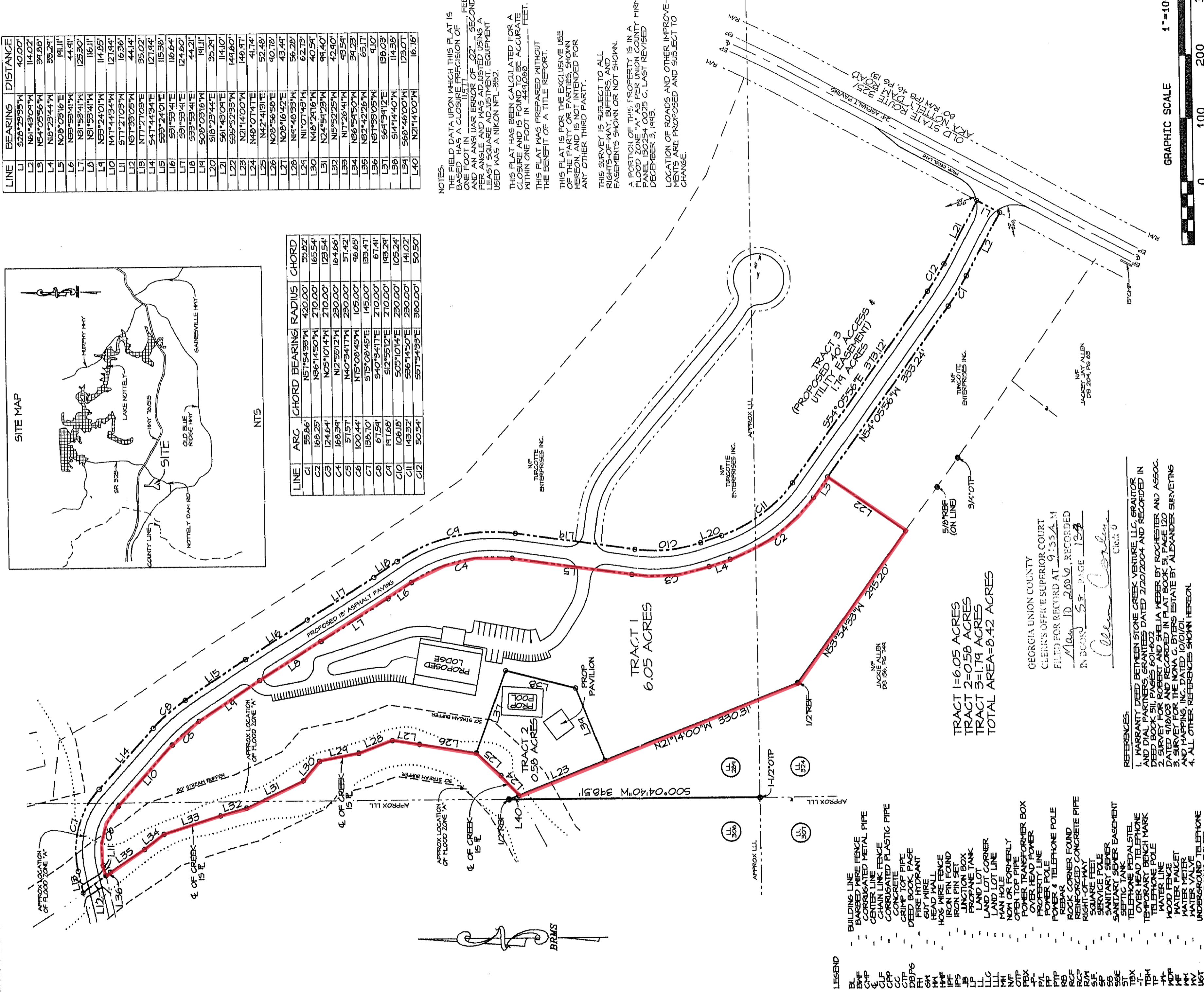
THIS PLAT WAS PREPARED WITHOUT THE BENEFIT OF A TITLE REPORT.

THIS SURVEY IS SUBJECT TO ALL RIGHTS-OF-WAY BUFFERS, AND EASEMENTS SHOWN OR NOT SHOWN.

A PORTION OF THIS PROPERTY IS IN A FLOOD ZONE "A" AS PER UNION COUNTY PANEL 180254 0025 C, LAST REVISED DECEMBER 3, 1995.

LOCATION OF ROADS AND OTHER IMPROVEMENTS ARE PROPOSED AND SUBJECT TO CHANGE.

LINE	ARC	CHORD BEARING	RADIUS	CHORD
C1	55.86'	N81°54'33"W	420.00'	53.82'
C2	168.25'	N86°14'50"W	270.00'	165.54'
C3	124.84'	N05°10'14"W	270.00'	229.54'
C4	168.34'	N12°52'12"W	290.00'	164.66'
C5	57.57'	N40°34'17"W	230.00'	57.42'
C6	100.44'	N75°08'45"W	180.00'	96.65'
C7	138.70'	N15°08'45"E	140.00'	133.47'
C8	67.54'	S40°34'17"E	210.00'	67.41'
C9	191.68'	S12°55'12"E	270.00'	183.24'
C10	106.18'	S05°10'14"E	230.00'	105.24'
C11	143.32'	S38°14'50"E	230.00'	141.02'
C12	50.54'	S81°54'53"E	380.00'	50.50'



TRACT 1=6.05 ACRES  
TRACT 2=0.58 ACRES  
TRACT 3=1.19 ACRES  
TOTAL AREA=8.42 ACRES

GEORGIA UNION COUNTY  
CLERK'S OFFICE SUPERIOR COURT  
FILED FOR RECORD AT 9:55 A.M.  
MAY 12 2004, RECORDED  
IN BOOK 58, PAGE 124

- REFERENCES:
1. MARRIAGE DEED BETWEEN STONE CREEK VENTURE LLC, GRATOR AND DIAL PARTNERS, GRANTED DATED 2/20/2004 AND RECORDED IN DEED BOOK 511, PAGES 1019-1020.
  2. SURVEY FOR AND RECORDED IN PLAT BOOK 51, PAGE 120 DATED MAY 02, THE NOMA G. BYERS ESTATE BY ALEXANDER SURVEYING AND MAPPING, INC. DATED 10/10/01.
  3. JACKIE ALLEN DEED DATED 12/15/04.
  4. ALL OTHER REFERENCES SHOWN HEREON.

IF SIGNATURE IS NOT BLUE INK THIS IS NOT AN ORIGINAL

- LEGEND
- BL BARBED WIRE FENCE
  - BNF BARRICADE FENCE
  - CMP CONCRETE MASONRY
  - CLF CORRUGATED METAL FENCE
  - CPL CURBED PLASTIC PIPE
  - CCP CONCRETE
  - CIP CONCRETE IN PLACE
  - CDB DEED BOOK, PAGE
  - FR FIRE HYDRANT
  - GM GUY WIRE
  - HMF HOG WIRE FENCE
  - IPF IRON PIN FOUND
  - IPFS IRON PIN SET
  - JP JOINT
  - LP LAND LOT
| LL | LAND LOT CORNER |
| LLL | LAND LOT LINE |
| LLH | LAND HOLE |
| MH | MAN HOLE |
| NF | NON OR FORMERLY |
| OTF | OPEN TO |
| PBX | POWER TRANSFORMER BOX |
| PH | POWER HEAD PUMP |
| PL | PROPERTY LINE |
| PFL | POWER POLE |
| PTP | POWER & TELEPHONE POLE |
| RB | REBAR |
| RCF | ROCK CORNER FOUND |
| RCP | REINFORCED CONCRETE PIPE |
| RMA | RIGHT-OF-WAY |
| SF | SQUARE FEET |
| SS | SANITARY SEWER |
| SSS | SANITARY SEWER EASEMENT |
| ST | SEPTIC TANK |
| TXB | TELEPHONE PEDALSTEL |
| OTHT | OVERHEAD TELEPHONE |
| TM | TEMPORARY BENCH MARK |
| TP | TELEPHONE POLE |
| TF | WOOD FENCE |
| WFM | WATER FACET |
| WT | WATER VALVE |
| MV | UNDERGROUND TELEPHONE |
| UGP | UNDERGROUND POWER |



DATE	5/03/06	ISSUE		DATE	BY	
SCALE:	HORIZ.	1" = 100' VERT.	NEL	DESCRIPTION	DATE	BY

1	1	1
PROJ. NAME: TURCOTTE BNDT2		

SURVEY FOR  
**TURCOTTE ENTERPRISES, INC.**  
LOCATED IN LAND LOTS 289, 306, & 324,  
9th DISTRICT 1st SECTION  
UNION COUNTY, GEORGIA

**Blue Ridge Mountain Surveying, Inc.**  
BRMS  
2874 Chapman Lane  
Blairsville, Ga. 30512  
706-745-7061



**CURVE CHART**

LINE	CHORD	ARC	CHORD BEARING	RADIUS
C1	16.74	16.74	S45°15'00"W	300.00
C2	35.14	35.14	N60°30'00"E	300.00
C3	51.72	51.72	N60°30'00"E	300.00
C4	60.00	60.00	N60°30'00"E	300.00
C5	61.44	61.44	N60°30'00"E	300.00
C6	61.89	61.89	N60°30'00"E	300.00
C7	61.90	61.90	N60°30'00"E	300.00
C8	61.89	61.89	N60°30'00"E	300.00
C9	61.89	61.89	N60°30'00"E	300.00
C10	61.89	61.89	N60°30'00"E	300.00
C11	61.89	61.89	N60°30'00"E	300.00
C12	61.89	61.89	N60°30'00"E	300.00
C13	61.89	61.89	N60°30'00"E	300.00
C14	61.89	61.89	N60°30'00"E	300.00
C15	61.89	61.89	N60°30'00"E	300.00
C16	61.89	61.89	N60°30'00"E	300.00
C17	61.89	61.89	N60°30'00"E	300.00
C18	61.89	61.89	N60°30'00"E	300.00
C19	61.89	61.89	N60°30'00"E	300.00
C20	61.89	61.89	N60°30'00"E	300.00
C21	61.89	61.89	N60°30'00"E	300.00
C22	61.89	61.89	N60°30'00"E	300.00
C23	61.89	61.89	N60°30'00"E	300.00
C24	61.89	61.89	N60°30'00"E	300.00
C25	61.89	61.89	N60°30'00"E	300.00
C26	61.89	61.89	N60°30'00"E	300.00
C27	61.89	61.89	N60°30'00"E	300.00
C28	61.89	61.89	N60°30'00"E	300.00

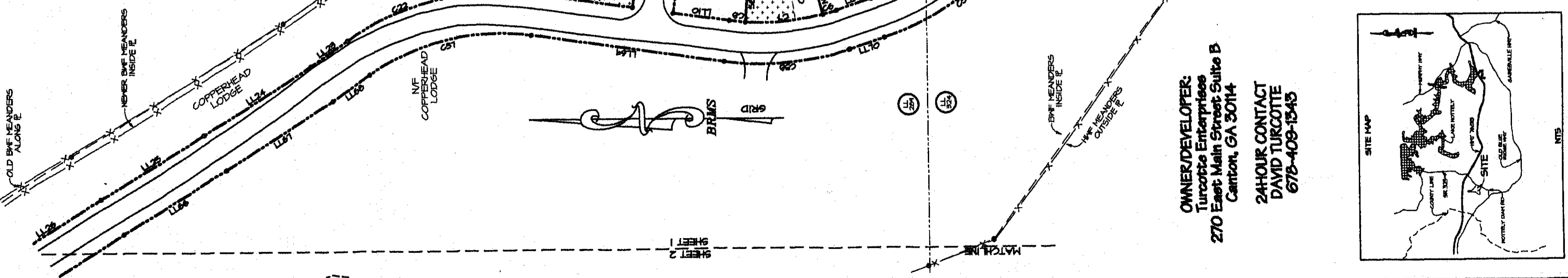
UNION COUNTY, GEORGIA  
CLERK'S OFFICE SUPERIOR COURT  
FILED FOR RECORD AT 4:35 PM  
16-18-10 RECORDED  
IN BOOK 63 PAGE 163  
*Judith A. D...  
Superior Court Clerk*

**BOUNDARY CALLS**

LINE	BEARINGS	DISTANCE
L1	S80°40'00"W	21.82
L2	S80°40'00"W	21.82
L3	S80°40'00"W	21.82
L4	S80°40'00"W	21.82
L5	S80°40'00"W	21.82
L6	S80°40'00"W	21.82
L7	S80°40'00"W	21.82
L8	S80°40'00"W	21.82
L9	S80°40'00"W	21.82
L10	S80°40'00"W	21.82
L11	S80°40'00"W	21.82
L12	S80°40'00"W	21.82
L13	S80°40'00"W	21.82
L14	S80°40'00"W	21.82
L15	S80°40'00"W	21.82
L16	S80°40'00"W	21.82
L17	S80°40'00"W	21.82
L18	S80°40'00"W	21.82
L19	S80°40'00"W	21.82
L20	S80°40'00"W	21.82
L21	S80°40'00"W	21.82
L22	S80°40'00"W	21.82
L23	S80°40'00"W	21.82
L24	S80°40'00"W	21.82
L25	S80°40'00"W	21.82
L26	S80°40'00"W	21.82
L27	S80°40'00"W	21.82
L28	S80°40'00"W	21.82
L29	S80°40'00"W	21.82
L30	S80°40'00"W	21.82
L31	S80°40'00"W	21.82
L32	S80°40'00"W	21.82
L33	S80°40'00"W	21.82
L34	S80°40'00"W	21.82
L35	S80°40'00"W	21.82
L36	S80°40'00"W	21.82
L37	S80°40'00"W	21.82
L38	S80°40'00"W	21.82
L39	S80°40'00"W	21.82
L40	S80°40'00"W	21.82
L41	S80°40'00"W	21.82
L42	S80°40'00"W	21.82
L43	S80°40'00"W	21.82
L44	S80°40'00"W	21.82
L45	S80°40'00"W	21.82
L46	S80°40'00"W	21.82
L47	S80°40'00"W	21.82
L48	S80°40'00"W	21.82
L49	S80°40'00"W	21.82
L50	S80°40'00"W	21.82
L51	S80°40'00"W	21.82
L52	S80°40'00"W	21.82
L53	S80°40'00"W	21.82
L54	S80°40'00"W	21.82
L55	S80°40'00"W	21.82
L56	S80°40'00"W	21.82
L57	S80°40'00"W	21.82
L58	S80°40'00"W	21.82
L59	S80°40'00"W	21.82
L60	S80°40'00"W	21.82
L61	S80°40'00"W	21.82
L62	S80°40'00"W	21.82
L63	S80°40'00"W	21.82
L64	S80°40'00"W	21.82
L65	S80°40'00"W	21.82
L66	S80°40'00"W	21.82
L67	S80°40'00"W	21.82
L68	S80°40'00"W	21.82
L69	S80°40'00"W	21.82
L70	S80°40'00"W	21.82
L71	S80°40'00"W	21.82
L72	S80°40'00"W	21.82
L73	S80°40'00"W	21.82
L74	S80°40'00"W	21.82
L75	S80°40'00"W	21.82
L76	S80°40'00"W	21.82
L77	S80°40'00"W	21.82
L78	S80°40'00"W	21.82
L79	S80°40'00"W	21.82
L80	S80°40'00"W	21.82
L81	S80°40'00"W	21.82
L82	S80°40'00"W	21.82
L83	S80°40'00"W	21.82
L84	S80°40'00"W	21.82
L85	S80°40'00"W	21.82
L86	S80°40'00"W	21.82
L87	S80°40'00"W	21.82
L88	S80°40'00"W	21.82
L89	S80°40'00"W	21.82
L90	S80°40'00"W	21.82
L91	S80°40'00"W	21.82
L92	S80°40'00"W	21.82
L93	S80°40'00"W	21.82
L94	S80°40'00"W	21.82
L95	S80°40'00"W	21.82
L96	S80°40'00"W	21.82
L97	S80°40'00"W	21.82
L98	S80°40'00"W	21.82
L99	S80°40'00"W	21.82
L100	S80°40'00"W	21.82

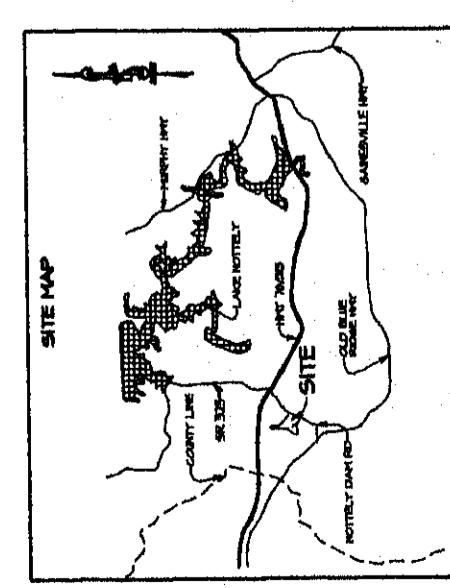
**EASEMENT CALLS**

LINE	BEARINGS	DISTANCE
E1	S80°40'00"W	21.82
E2	S80°40'00"W	21.82
E3	S80°40'00"W	21.82
E4	S80°40'00"W	21.82
E5	S80°40'00"W	21.82
E6	S80°40'00"W	21.82
E7	S80°40'00"W	21.82
E8	S80°40'00"W	21.82
E9	S80°40'00"W	21.82
E10	S80°40'00"W	21.82
E11	S80°40'00"W	21.82
E12	S80°40'00"W	21.82
E13	S80°40'00"W	21.82
E14	S80°40'00"W	21.82
E15	S80°40'00"W	21.82
E16	S80°40'00"W	21.82
E17	S80°40'00"W	21.82
E18	S80°40'00"W	21.82
E19	S80°40'00"W	21.82
E20	S80°40'00"W	21.82
E21	S80°40'00"W	21.82
E22	S80°40'00"W	21.82
E23	S80°40'00"W	21.82
E24	S80°40'00"W	21.82
E25	S80°40'00"W	21.82
E26	S80°40'00"W	21.82
E27	S80°40'00"W	21.82
E28	S80°40'00"W	21.82
E29	S80°40'00"W	21.82
E30	S80°40'00"W	21.82
E31	S80°40'00"W	21.82
E32	S80°40'00"W	21.82
E33	S80°40'00"W	21.82
E34	S80°40'00"W	21.82
E35	S80°40'00"W	21.82
E36	S80°40'00"W	21.82
E37	S80°40'00"W	21.82
E38	S80°40'00"W	21.82
E39	S80°40'00"W	21.82
E40	S80°40'00"W	21.82
E41	S80°40'00"W	21.82
E42	S80°40'00"W	21.82
E43	S80°40'00"W	21.82
E44	S80°40'00"W	21.82
E45	S80°40'00"W	21.82
E46	S80°40'00"W	21.82
E47	S80°40'00"W	21.82
E48	S80°40'00"W	21.82
E49	S80°40'00"W	21.82
E50	S80°40'00"W	21.82
E51	S80°40'00"W	21.82
E52	S80°40'00"W	21.82
E53	S80°40'00"W	21.82
E54	S80°40'00"W	21.82
E55	S80°40'00"W	21.82
E56	S80°40'00"W	21.82
E57	S80°40'00"W	21.82
E58	S80°40'00"W	21.82
E59	S80°40'00"W	21.82
E60	S80°40'00"W	21.82
E61	S80°40'00"W	21.82
E62	S80°40'00"W	21.82
E63	S80°40'00"W	21.82
E64	S80°40'00"W	21.82
E65	S80°40'00"W	21.82
E66	S80°40'00"W	21.82
E67	S80°40'00"W	21.82
E68	S80°40'00"W	21.82
E69	S80°40'00"W	21.82
E70	S80°40'00"W	21.82
E71	S80°40'00"W	21.82
E72	S80°40'00"W	21.82
E73	S80°40'00"W	21.82
E74	S80°40'00"W	21.82
E75	S80°40'00"W	21.82
E76	S80°40'00"W	21.82
E77	S80°40'00"W	21.82
E78	S80°40'00"W	21.82
E79	S80°40'00"W	21.82
E80	S80°40'00"W	21.82



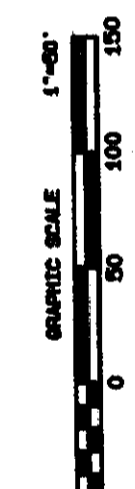
**OWNER/DEVELOPER:**  
Turcotte Enterprises  
270 East Main Street Suite B  
Canton, GA 30114

**24-HOUR CONTACT**  
DAVID TURCOTTE  
678-409-1545



NO CONSTRUCTION IS ALLOWED ON ANY LOT WITHOUT A BUILDING PERMIT.  
APPROVED BY UNION COUNTY.  
UNION COUNTY  
DATE 1-19-07

HEALTH DEPARTMENT APPROVAL  
*Doreen W. King* 1/12/07  
HEALTH OFFICER DATE  
SEWERAGE APPROVAL FOR USE OF SEPTIC TANK SYSTEMS WITH THE FOLLOWING RESTRICTIONS:  
1. SEPTIC PERMIT MUST BE ISSUED ON ANY LOT BEFORE ANY CONSTRUCTION CAN BEGIN.  
2. NO LOTS MAY BE SUBDIVIDED.  
3. NO FILLING OR EXCAVATION ON ANY LOT.  
4. REQUIRE PERMITS.



DATE: OCTOBER 28, 2008  
SCALE: HORIZ. 1"=50' VERT. 1/4"=10'  
LANS DATES: 2008, 2008, 2008  
DESIGNED BY: [Signature]  
CHECKED BY: [Signature]  
STATE: GEORGIA  
COUNTY: UNION  
PROJECT NO.: [Number]  
FILE NO.: [Number]

SHEET 1 OF 2  
TURCOTTE  
PROJECT NO. [Number]  
FILE NO. [Number]

FINAL PLAT FOR:  
**THE CABINS AT COPPERHEAD**  
LOCATED IN LAND LOTS 289 & 324,  
8th DISTRICT 1st SECTION AND LAND  
LOT 308, 8th DISTRICT, 1st SECTION  
UNION COUNTY, GEORGIA

**Blue Ridge Mountain Surveying, Inc.**  
BRMS  
246 Lakewood Circle  
Buckley, GA 30606  
706-997-3195