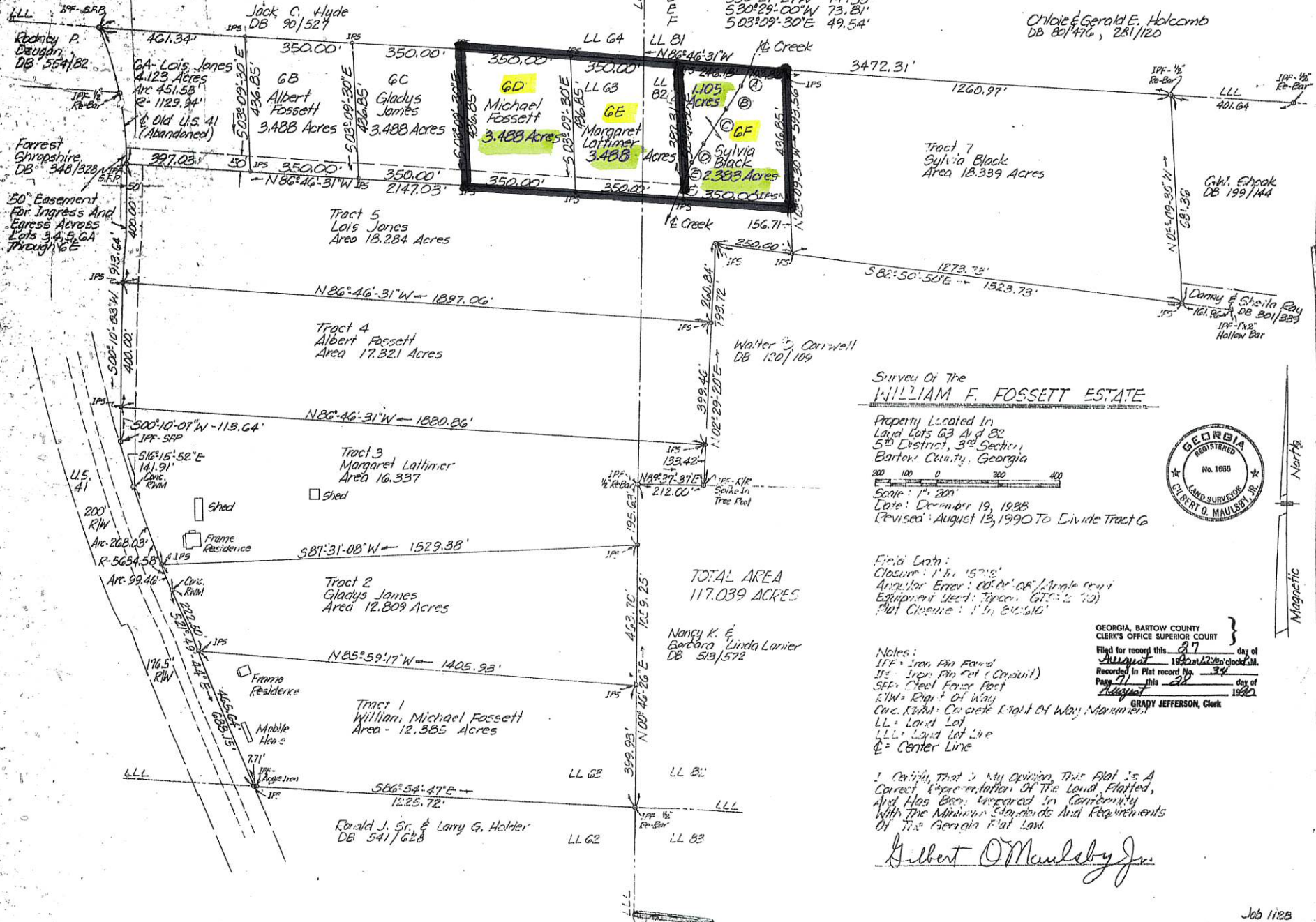


Course Bearing Distance

526°24'37"W	62.05'
630°55'57"W	96.59'
534°03'34"W	128.62'
530°24'24"W	74.53'
530°29'00"W	73.81'
503°09'30"E	49.54'



Survey Of The
WILLIAM F. FOSSETT ESTATE

Property Located In
Land Lots G3 And G2
5th District, 3rd Section,
Bartow County, Georgia
Scale: 1" = 200'
Date: December 19, 1988
Revised: August 13, 1990 To Divide Tract G



Field Data:
Closure: 1" in 1570'
Angular Error: 00.00' of Angle (100)
Equipment Used: Topcon GTS-2 (10)
Flat Closure: 1" in 610,010'

Notes:
IPF - Iron Pin Found
IPF - Iron Pin Set (Comput)
SFF - Steel Fence Post
R/W - Right of Way
C.C. - Concrete Right of Way Monument
LL - Land Lot
LLL - Land Lot Line
CL - Center Line

I Certify that in My Opinion, This Plat is a
Correct Representation of the Land Platted,
And Has Been Prepared in Conformity
With the Minimum Standards and Requirements
of the Georgia Plat Law.

Gilbert O. Maulsby Jr.

GEORGIA, BARTOW COUNTY
CLERK'S OFFICE SUPERIOR COURT
Filed for record this 27 day of
August 1990 at 12:00 o'clock PM
Recorded in Plat Record No. 34
Page 71 this 28 day of
August 1990
GRADY JEFFERSON, Clerk

SYSTEMS