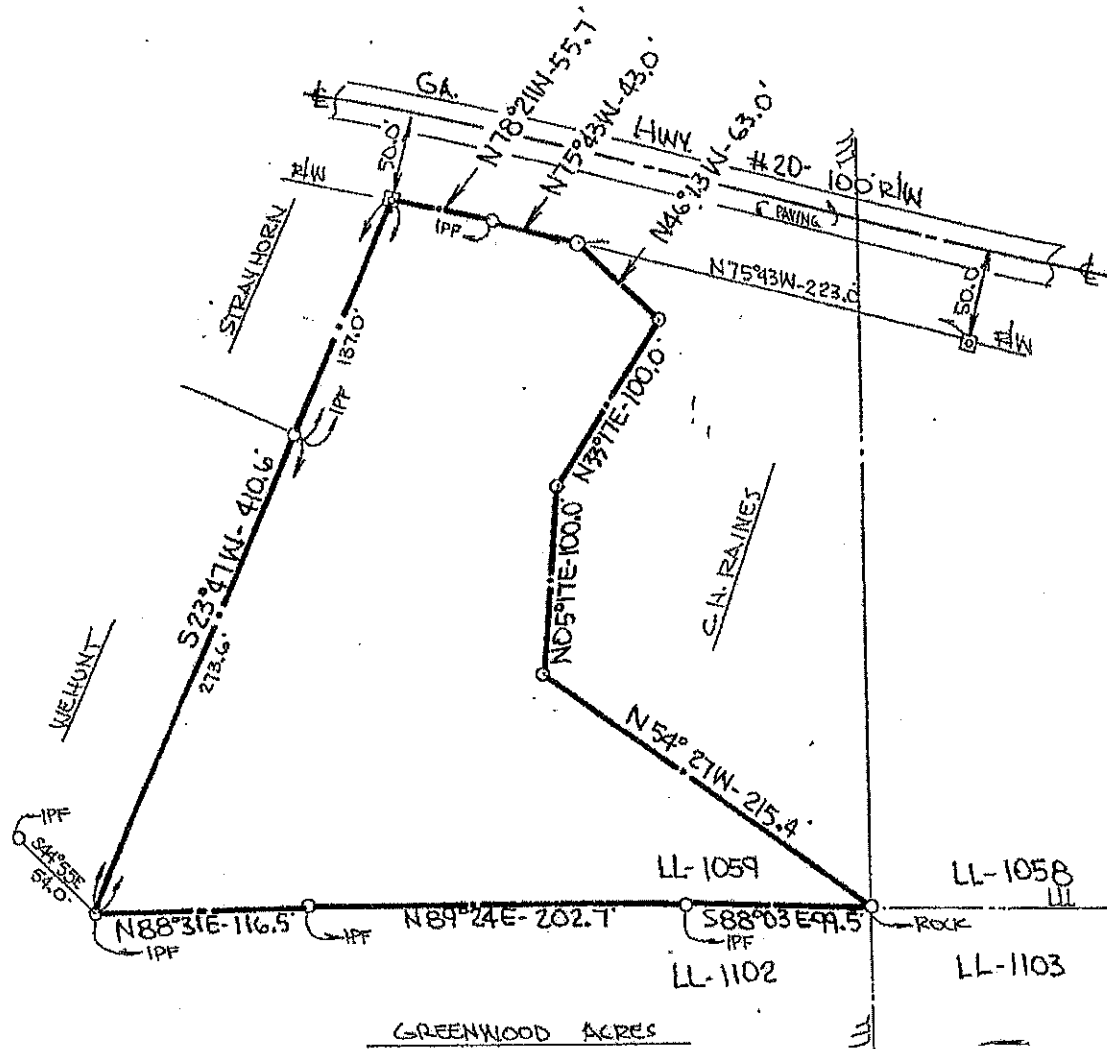


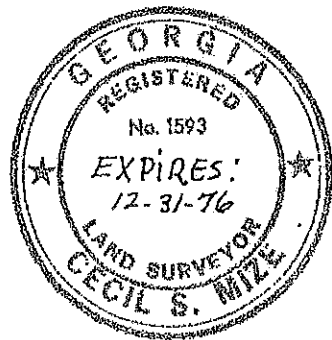
LLL : LAND LOT LINE
 IPF : IRON PIN FOUND
 IP : IRON PIN SET
 CL : CENTER LINE
 R/W : RIGHT OF WAY

SCALE : 1" = 100'
 ACRES : 1.72
 DATE : 8-19-74 & 5-6-75



A PLAT OF PROPERTY FOR
HARVEY WEHUNT
 IN LAND LOTS 1058
 3RD DISTRICT - 1ST SECTION
 FORSYTH COUNTY, GEORGIA

IN MY OPINION THIS PLAT IS A CORRECT
 REPRESENTATION OF THE LAND PLATTED
 AND HAS BEEN PREPARED IN CONFORMITY
 WITH THE MINIMUM STANDARDS AND RE-
 QUIREMENTS OF LAW.



68-379
 Cecil S. Mize
 CECIL S. MIZE REG. SURV. No. 1593
 MIZE BROTHERS, INC.
 CUMMING - GEORGIA

MAGNETIC