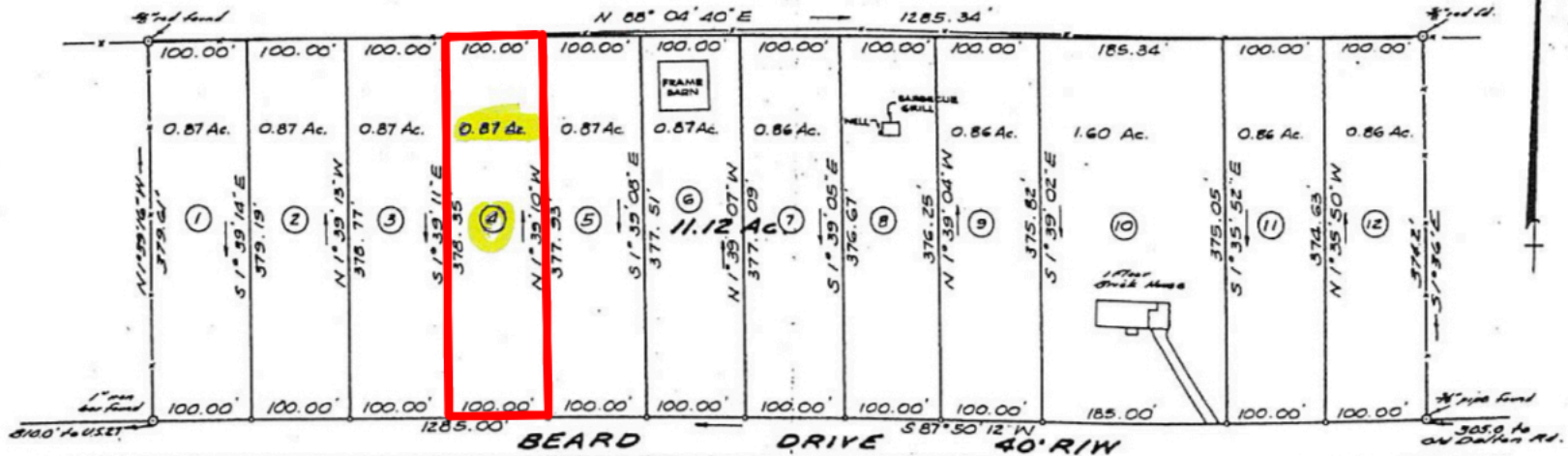


SURVEYED FOR  
**THE J. F. BEARD ESTATE**  
 Land Lot 76 23rd District 3rd Section  
 Floyd County, Georgia.  
 1 inch = 100 feet August 24, 1901



STATE OF GEORGIA, FLOYD COUNTY  
 I HEREBY CERTIFY THIS INSTRUMENT WAS FILED FOR RECORD IN  
 THE CLERK'S OFFICE SUPERIOR COURT, SAID COUNTY ON THE 7th  
 DAY OF November, 1903 4:40 O'CLOCK P. M.  
 AND RECORDED IN BOOK NO. 15 OF PLATS PAGE 233  
 THIS 8th DAY OF November 1903  
MARY WILSON  
 DEPUTY CLERK SUPERIOR COURT, FLOYD COUNTY, GEORGIA



In my opinion this plat is a correct representation of the land platted and has been prepared in conformity with the minimum standards and requirements of law.

A. H. Hough R.L.S.  
 Georgia Registration No. 1522



- Notes: 1. Equipment used: Leitz T.M. 6 theodolite & 200' steel tape.  
 2. Error of Closure is 1 in 14,452.  
 3. Originally surveyed August 24, 1901. Divided into lots September 16, 1903.  
 4. Iron Pins placed @ all Corners.