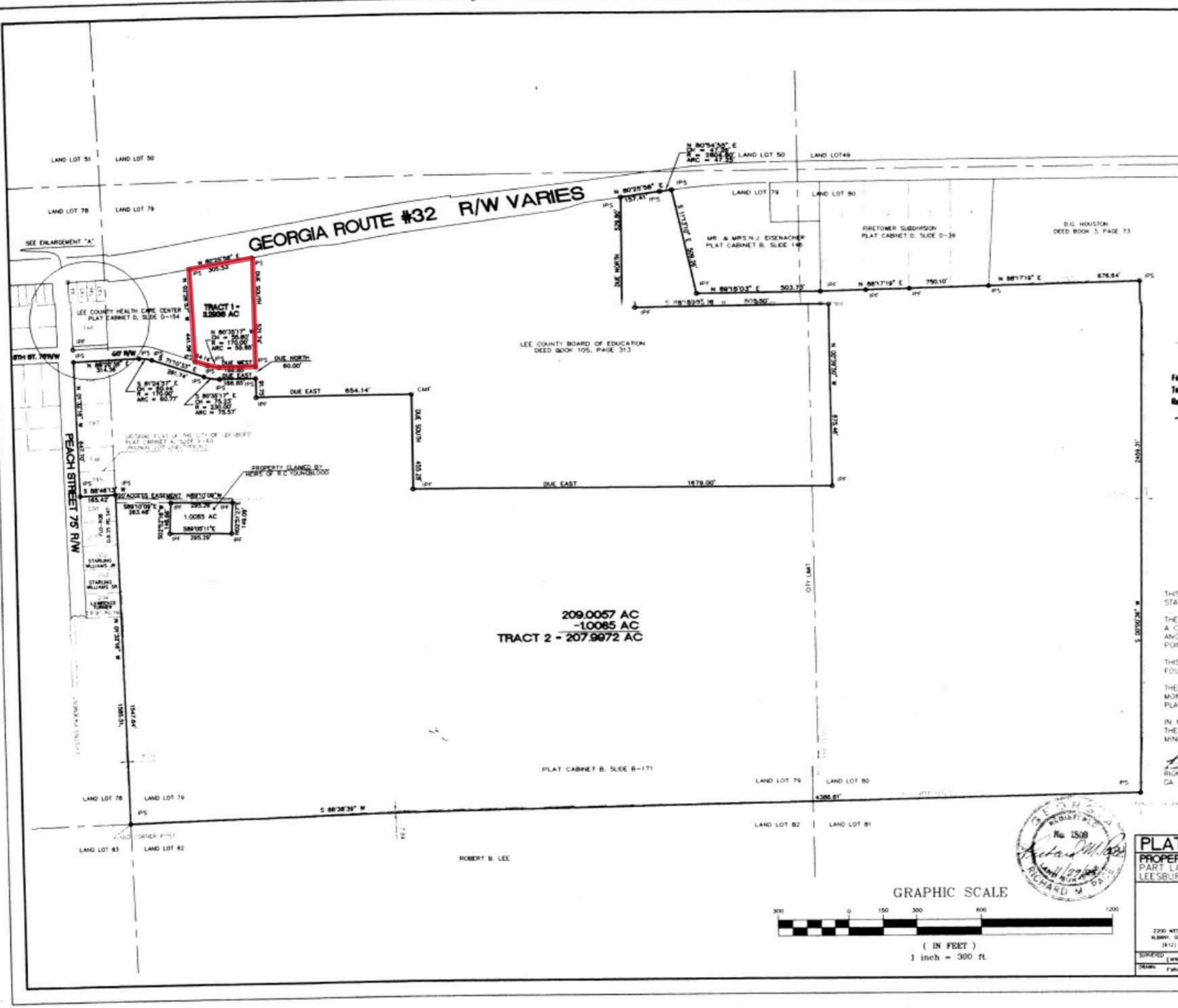


ENLARGEMENT 'A'



GEORGIA, LEE COUNTY
 CLERK'S OFFICE SUPERIOR COURT
 Filed: November 29 1995
 Time: 3:30 PM Plat Cabinet D Slide D 161
 Recorded: November 29 1995
W. L. Bell, Dep. Clerk

ROBERT B. LEE



THIS SURVEY WAS MADE USING AN ELECTRONIC GEODETIC TOTAL STATION WITH DIRECT READING TO FIVE SECONDS.

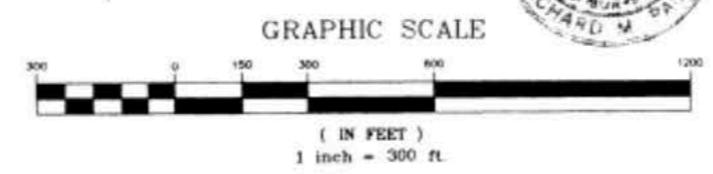
THE FIELD DATA UPON WHICH THIS MAP OR PLAT IS BASED HAS A CLOSURE PRECISION OF ONE FOOT IN 24,110 FEET AND AN ANGULAR ERROR OF 00 DEGREES 00 MINUTES 02 SECONDS PER ANGLE POINT, AND WAS ADJUSTED USING THE COMPASS RULE.

THIS MAP OR PLAT HAS BEEN CALCULATED FOR CLOSURE AND IS FOUND TO BE ACCURATE WITHIN ONE FOOT IN 804,021.83 FEET.

THERE IS NO KNOWN NATIONAL GEODETIC SURVEY (N.G.S.) MONUMENT WITHIN 500 FEET OF ANY POINT ON THE PROPERTY PLATTED, OR ANY POINT OF REFERENCE THEREON.

IN MY OPINION, THIS MAP OR PLAT IS A CORRECT REPRESENTATION OF THE LAND PLATTED AND HAS BEEN PREPARED IN CONFORMITY WITH THE MINIMUM STANDARDS AND REQUIREMENTS OF LAWS.

Richard M. Pace DATE 11/29/95
 RICHARD M. PACE
 GA. REG. LAND SURVEYOR No. 1509



PLAT OF SURVEY
 PROPERTY OF FREDERICK H. HANCOCK
 PART LAND LOTS 78, 79 AND 80 SECOND LAND DISTRICT
 LEE'SBURG, LEE COUNTY, GEORGIA

Stevenson & Palmer
Engineering
 INCORPORATED

2200 WEST TOWN ROAD
 ALBANY, GEORGIA 31707
 (478) 883-0111

2430 HEROWAY WAY, SUITE 100
 SMYRNA, GEORGIA 30080
 (404) 952-2481

SUPP'D	DATE	DESIGN'D	PROJ. NO.	SCALE	SHEET NUMBER
FILED	11-29-95	RMP	9511	1" = 300'	1 OF 1