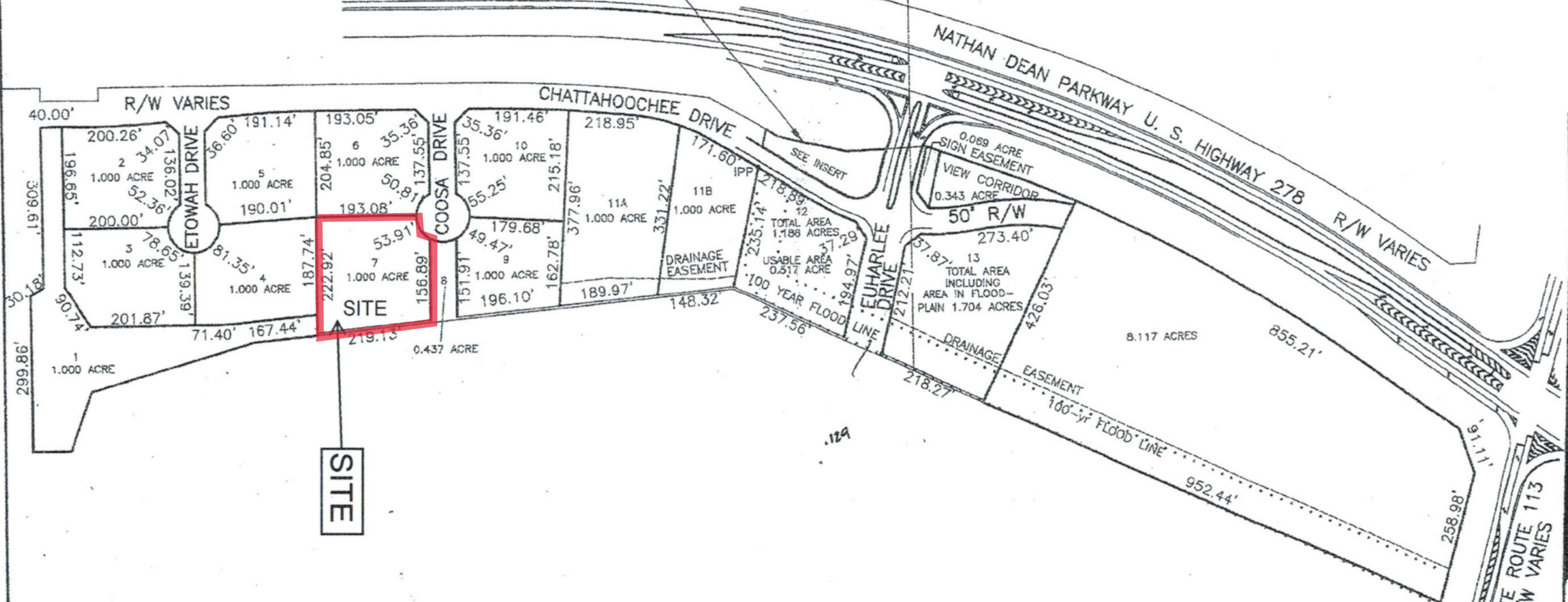
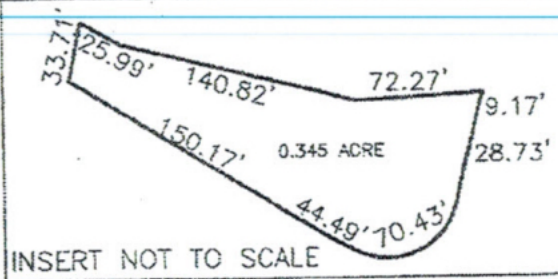


DRAWING FOR
 EUHARLEE PROPERTIES, LLC.
 PHASE ONE
 PROPERTY IN THE CITY OF ROCKMART
 IN LAND LOTS 724 & 725
 18th DISTRICT, 3rd SECTION
 POLK COUNTY, GEORGIA



SITE

NOTE: IRON PINS ARE (1/2" RE-BAR)
 EXCEPT AS SHOWN.

SMITH & SMITH LAND SURVEYORS, P.C.
 2 SOUTH AVENUE, CARTERSVILLE, GA. 30120
 PHONE 770-382-0457

REGISTERED LAND SURVEYOR No. 1803

R/W — RIGHT OF WAY	R — RADIUS LP — LIGHT POLE
IPP — IRON PIN PLACED	-X-X- FENCE
IPF — IRON PIN FOUND	— LAND LOT LINE
CM — CONCRETE MARKER	⊙ — CENTER LINE
CH — CHORD	— POWER LINE
L OR A — LENGTH OF CURVE	PP — POWER POLE



JULY 23, 2007
 REVISED 8-1-2007
 REVISED 8-6-2007

0 40 200
 20 100 300
 SCALE 1"=200'
 FILE 5311-19

MAG. NORTH

NATHAN DEAN PARKWAY

U. S. HIGHWAY 278

R/W VARIES

06'50"W

0'

S 89°53'10"E
753.98'

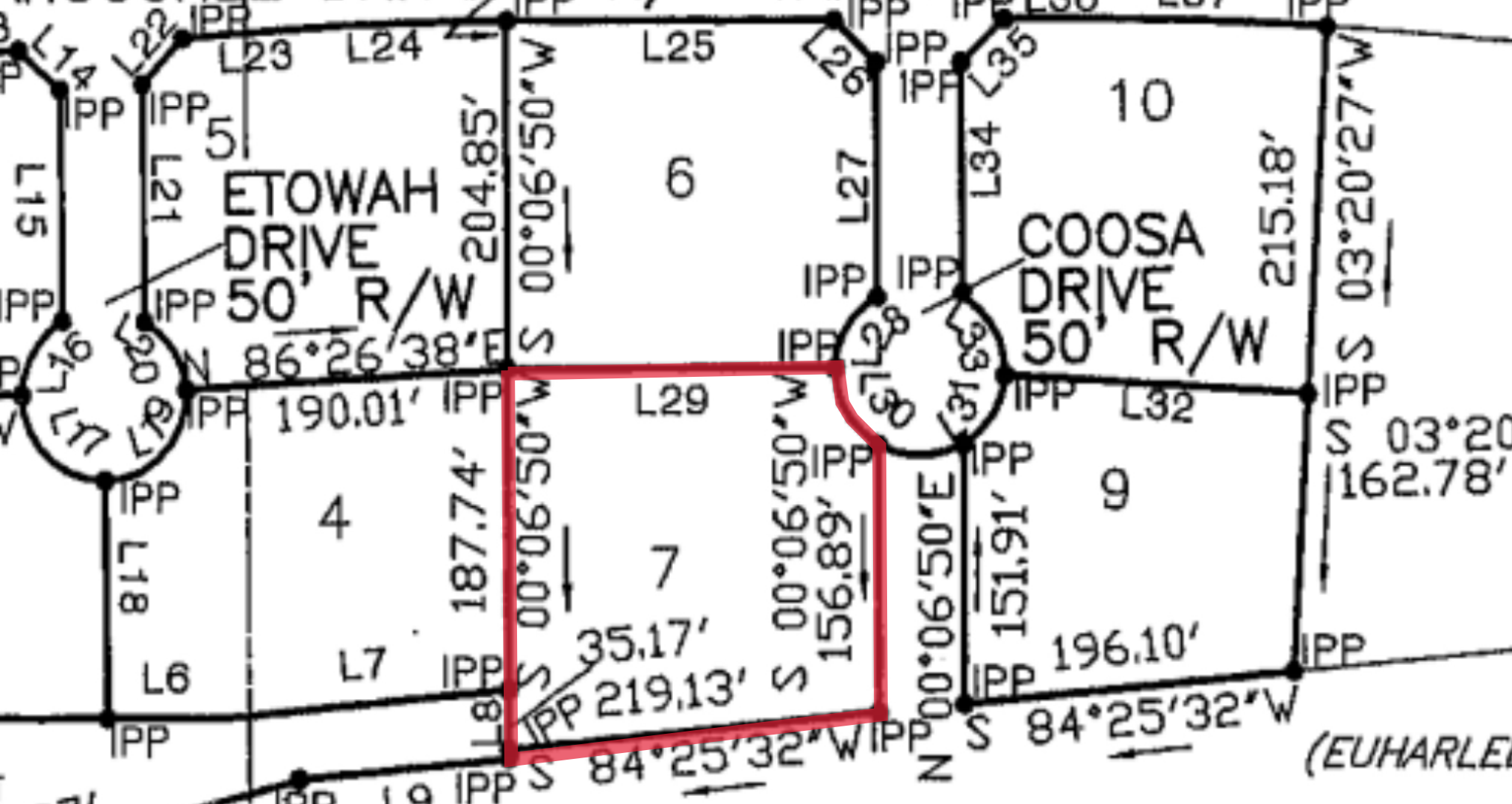
S 89°53'10"E
20.93'

AHOOCHEE DRIVE

R/W VARIES

CM

L36 L37



(EUHARLE