

Offering 5

Property 501: Tracts 1-3

Property 502: Tracts 4-8

Property 503: Tracts 9-13

Property 504: Tracts 23-27

Property 505: Tracts 28-31

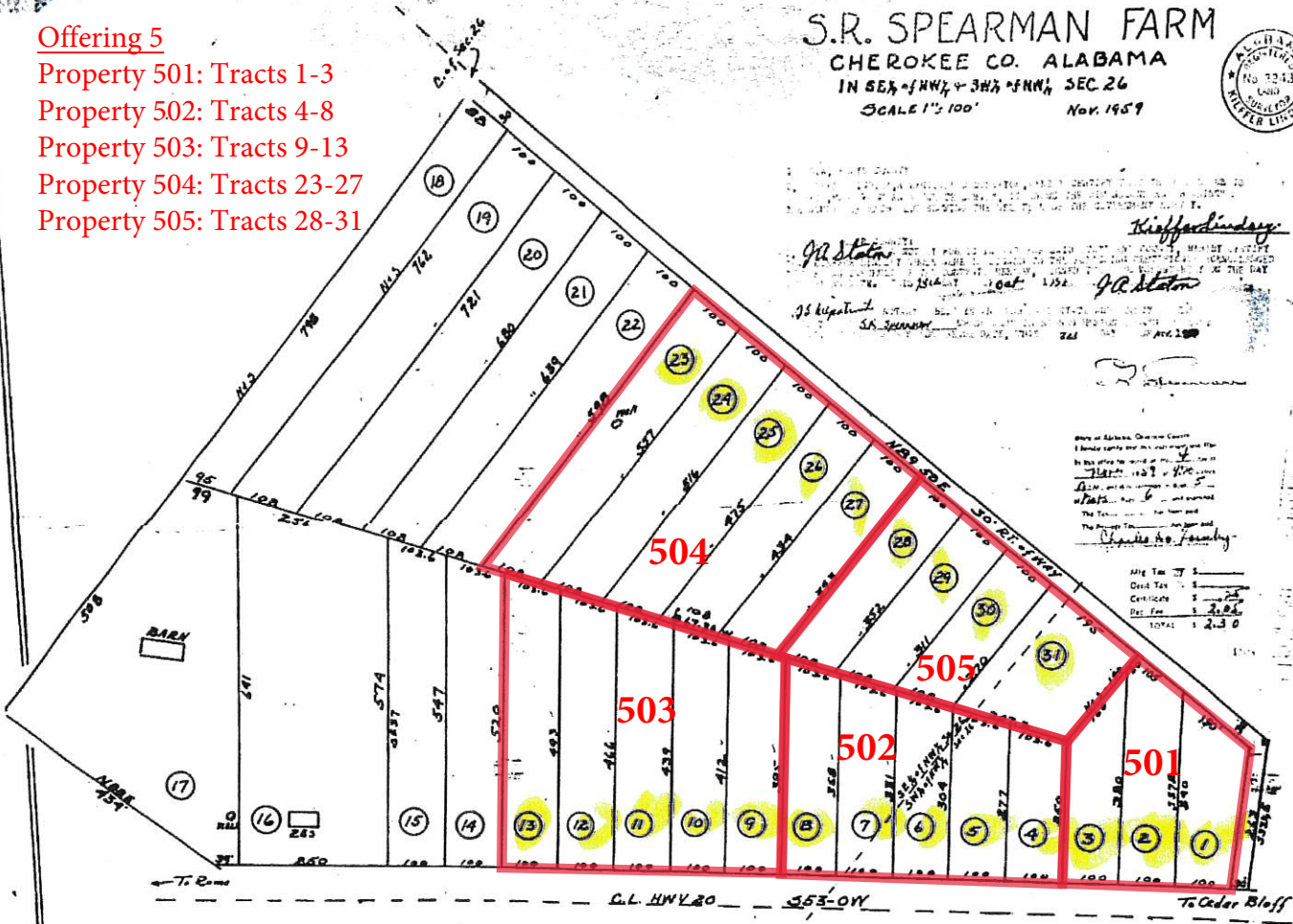
S.R. SPEARMAN FARM

CHEROKEE CO. ALABAMA

IN SE $\frac{1}{2}$ - 1/4 NW $\frac{1}{4}$ + SW $\frac{1}{4}$ - 1/4 NW $\frac{1}{4}$, SEC. 26

SCALE 1" = 100'

Nov. 1959



State of Alabama, Cherokee County
I, Clerk of the Court, do hereby certify that the within and foregoing plat is a true and correct copy of the original as the same appears on file in my office.
Witness my hand and the seal of the Court at the City of Dothan, Alabama, this 6th day of November, 1959.
The True and Correct Clerk of the Court
Charles H. Forsythe

Acres	1.230
Sq. Ft.	53,000
Per Acre	43,000
TOTAL	1.230

C.L. HWY 20

553-0W

To Cedar Bluff