

FLETCHER and ROSEMARY SEWELL SUBDIVISION OF WEISS OF LAKE

SW $\frac{1}{4}$ -SW $\frac{1}{4}$ SEC.-34

SE $\frac{1}{4}$ -SW $\frac{1}{4}$ SEC.-34

NW $\frac{1}{4}$ -NW $\frac{1}{4}$ SEC.-3

795. 886
795. 886

SUMNER PLACE ROAD

ROSEMARY LAKE
RIVER

COOSA

STATE OF ALABAMA
COUNTY OF CHEROKEE

I, ROSEMARY SEWELL, of the County of Cherokee, State of Alabama, do hereby certify that the above and foregoing plat of the FLETCHER and ROSEMARY SEWELL SUBDIVISION OF WEISS OF LAKE, is a true and correct copy of the original plat filed for record in the office of the County Clerk of Cherokee County, Alabama, on this 15th day of May, 1922, and that the same is a true and correct copy of the original plat filed for record in the office of the County Clerk of Cherokee County, Alabama, on this 15th day of May, 1922, and that the same is a true and correct copy of the original plat filed for record in the office of the County Clerk of Cherokee County, Alabama, on this 15th day of May, 1922.

ROSEMARY SEWELL

STATE OF ALABAMA
COUNTY OF CHEROKEE

I, FLETCHER SEWELL, of the County of Cherokee, State of Alabama, do hereby certify that the above and foregoing plat of the FLETCHER and ROSEMARY SEWELL SUBDIVISION OF WEISS OF LAKE, is a true and correct copy of the original plat filed for record in the office of the County Clerk of Cherokee County, Alabama, on this 15th day of May, 1922, and that the same is a true and correct copy of the original plat filed for record in the office of the County Clerk of Cherokee County, Alabama, on this 15th day of May, 1922, and that the same is a true and correct copy of the original plat filed for record in the office of the County Clerk of Cherokee County, Alabama, on this 15th day of May, 1922.

FLETCHER SEWELL

STATE OF ALABAMA
COUNTY OF CHEROKEE

I, ROSEMARY SEWELL, of the County of Cherokee, State of Alabama, do hereby certify that the above and foregoing plat of the FLETCHER and ROSEMARY SEWELL SUBDIVISION OF WEISS OF LAKE, is a true and correct copy of the original plat filed for record in the office of the County Clerk of Cherokee County, Alabama, on this 15th day of May, 1922, and that the same is a true and correct copy of the original plat filed for record in the office of the County Clerk of Cherokee County, Alabama, on this 15th day of May, 1922, and that the same is a true and correct copy of the original plat filed for record in the office of the County Clerk of Cherokee County, Alabama, on this 15th day of May, 1922.

ROSEMARY SEWELL

RESTRICTIONS & LIMITATIONS

1. NO APPLICABLE DEEDS SHALL BE CONSIDERED AS AFFECTING THIS PLAT.
2. THE RESERVATION OF THIS PLAT SHALL BE RESTRICTED TO THE USE OF THE COUNTY OF CHEROKEE AND A PORTION OF THE COUNTY OF LIVINGSTON, INCLUDING OF THE COUNTY OF CHEROKEE.
3. NO APPLICABLE DEEDS SHALL BE CONSIDERED AS AFFECTING THIS PLAT.
4. NO APPLICABLE DEEDS SHALL BE CONSIDERED AS AFFECTING THIS PLAT.

STATE OF ALABAMA
COUNTY OF CHEROKEE

I, ROSEMARY SEWELL, of the County of Cherokee, State of Alabama, do hereby certify that the above and foregoing plat of the FLETCHER and ROSEMARY SEWELL SUBDIVISION OF WEISS OF LAKE, is a true and correct copy of the original plat filed for record in the office of the County Clerk of Cherokee County, Alabama, on this 15th day of May, 1922, and that the same is a true and correct copy of the original plat filed for record in the office of the County Clerk of Cherokee County, Alabama, on this 15th day of May, 1922, and that the same is a true and correct copy of the original plat filed for record in the office of the County Clerk of Cherokee County, Alabama, on this 15th day of May, 1922.

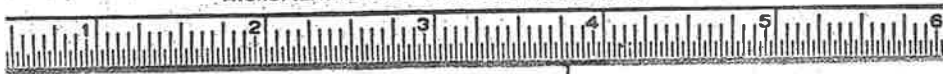
ROSEMARY SEWELL

ROBERTS & SON, INC.

P. O. BOX 1382

PRINTERS — BOOKBINDERS — LITHOGRAPHERS BIRMINGHAM, ALABAMA

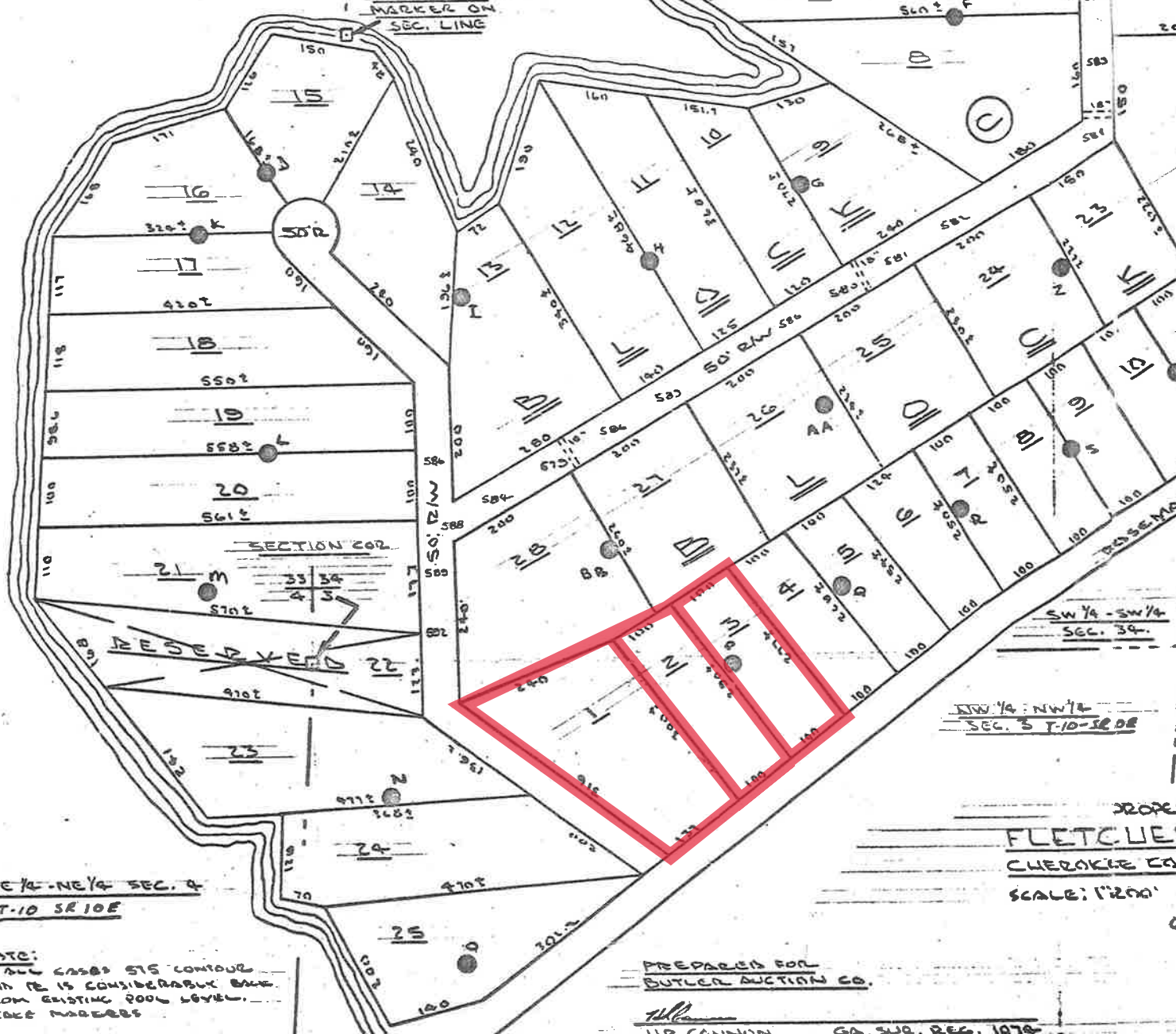
MICROFILMING AND MICRO-REPRODUCTIONS



LAKE WEISS

SE 1/4 - SE 1/4 SEC. 33

ALA. POW. CO
MARKER ON
SEC. LINE



RESERVED

SECTION COR.

NE 1/4 - NE 1/4 SEC. 4
T-10 S R 10 E

SW 1/4 - SW 1/4
SEC. 34

NW 1/4 - NW 1/4
SEC. 5 T-10-S R 10 E

PREPARED FOR
FLETCHER
CHEROKEE CO.
SCALE: 1"=200'

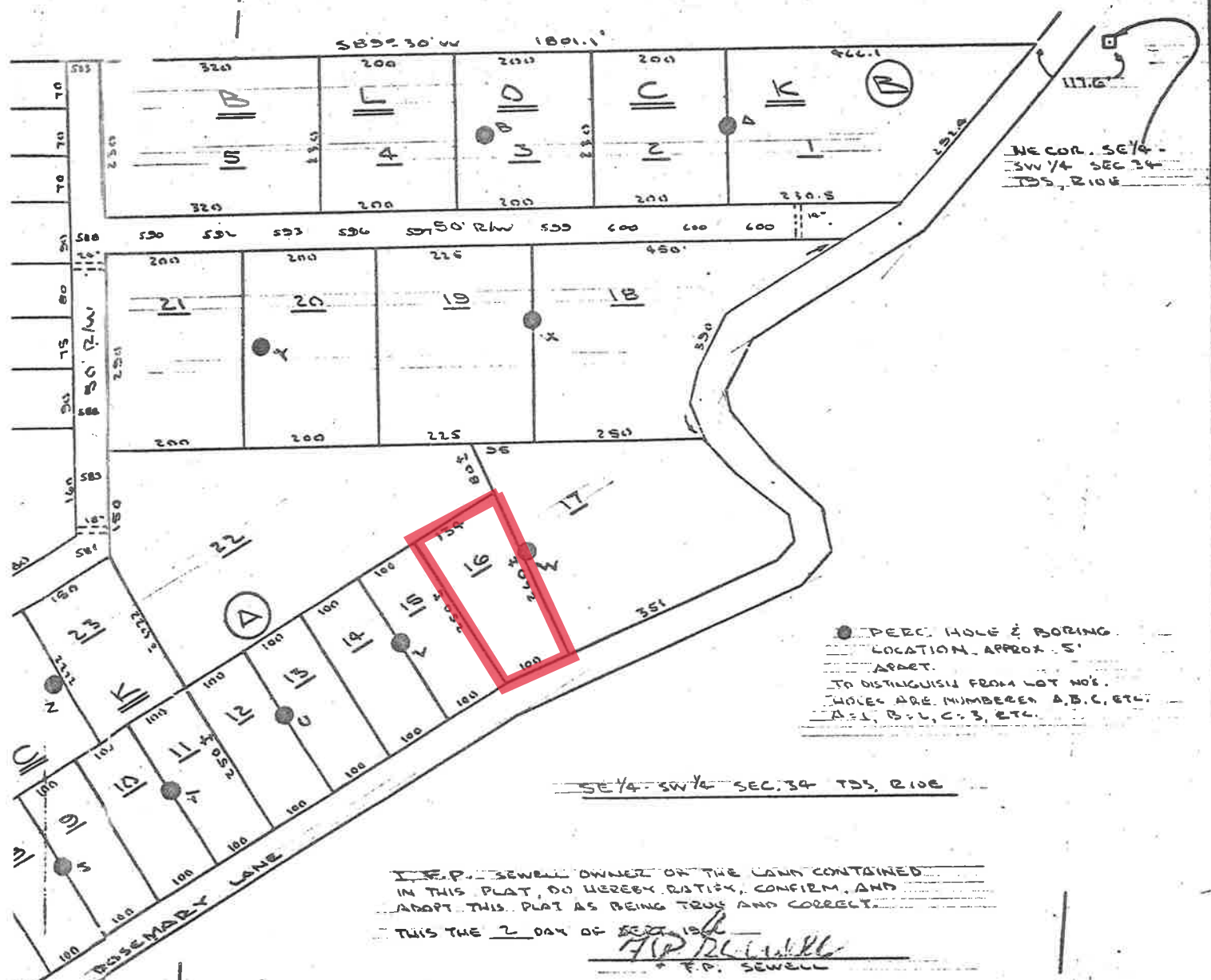
PREPARED FOR
BUTLER AUCTION CO.

W.C. Cannon

GA. SUR. REG. 1078

NOTE:
IN ALL CASES STG CONTOUR
AND FB IS CONSIDERABLE DIFF.
FROM EXISTING POOL LEVEL.
STAKE MARKERS

REV
880
540



● PERC. HOLE & BORING LOCATION, APPROX. 5' APART.
 * TO DISTINGUISH FROM LOT NO'S. HOLES ARE NUMBERED A, B, C, ETC. A-1, B-1, C-1, ETC.

SE 1/4 - SW 1/4 SEC. 34 T5S, R10E

I, F.P. SEWELL OWNER OF THE LAND CONTAINED IN THIS PLAT, DO HEREBY RATIFY, CONFIRM, AND ADOPT THIS PLAT AS BEING TRUE AND CORRECT.

THIS THE 2 DAY OF SEPT. 1966
F.P. SEWELL
 F.P. SEWELL

Sworn to and subscribed before me on this the 2nd day of Sept. 1966.

Clara Ann Tate
 Notary Public, Cherokee County, Alabama

State of Alabama, Cherokee County
 I hereby certify that this instrument was filed in this office for record on the 30 day of Sept 1966 at 9:00 o'clock A.M., and duly recorded Certificate 25 Recording Fee 5.95/1966 paid
Bull C. Jordan
 Judge of Probate, Cherokee County

SW 1/4 - SW 1/4 SEC. 34.

NW 1/4 T-10-S20E

PROPERTY OF
LETCHER A. SEWELL
CHEROKEE COUNTY ALABAMA
DATE: 11200' JUNE 23, 1966

69.566.

I HEREBY CERTIFY THAT THIS SUBD. MEETS THE REQUIREMENTS AS SET OUT BY THE ALABAMA STATE HEALTH DEPT. SEE: BELOW *

Joe C. Fellers
 COUNTY SANITATION OFFICER

* THE FOLLOWING LOTS ARE APPROVED: BLOCK A: 1, 2, 3, 4, 5, 6, 7, 8, 9, 10, 11, 12, 13, 14, 15, 16, 17, 18, 19, 20, 21, 22, 23, 24, 25. BLOCK B: 1, 2, 3, 4, 5. BLOCK C: 1, 2, 3, 4, 5, 6, 7, 8, 9, 10, 11, 12, 13, 14, 15, 16, 17, 18, 19, 20, 21, 22, 23, 24, 25

ESV. NO. 1 8-6-66
 SHOW 515 CONTAINING LINES & SHOW CROSS DRAINS
 ZOMBING LOTS 12-13 169-66